

# FTOOL

Tutorial for the creation of a bridge model  
with two load-trains, and visualization of  
critical load-train positions along influence  
lines and of internal force envelopes

Educational Version 3.00

August 2012

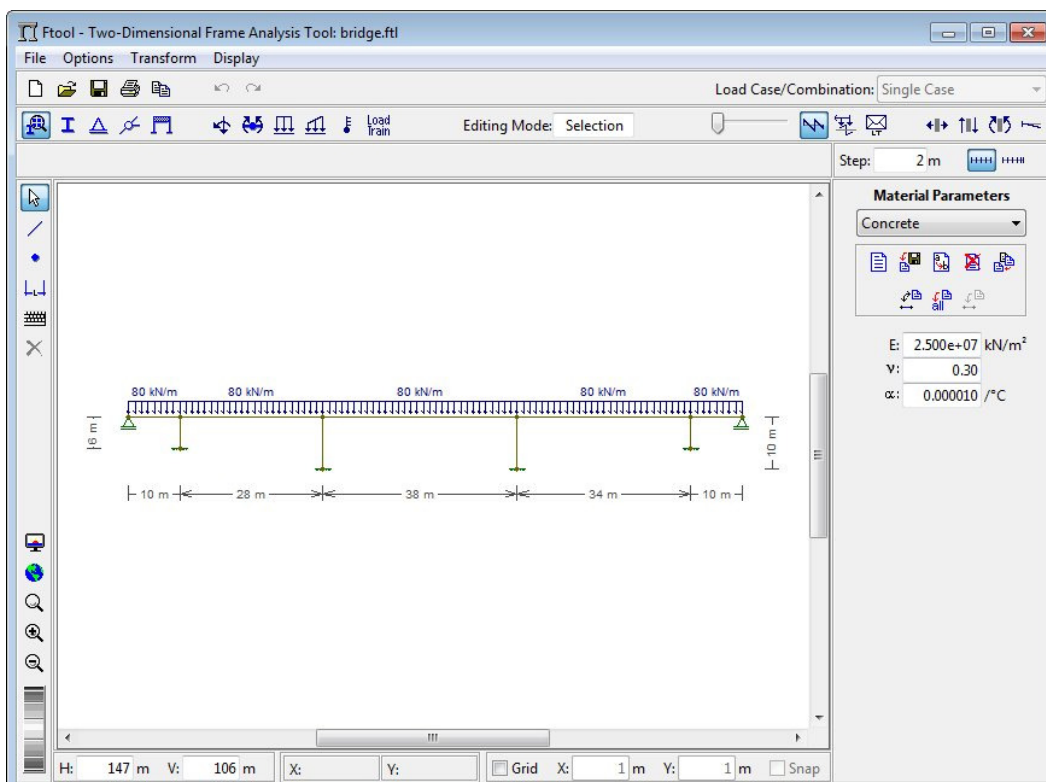
<http://www.tecgraf.puc-rio.br/ftool>

This file:

[http://www.tecgraf.puc-rio.br/ftp\\_pub/lfm/ftool300tutorialloadtrain.pdf](http://www.tecgraf.puc-rio.br/ftp_pub/lfm/ftool300tutorialloadtrain.pdf)

FTOOL model:

[http://www.tecgraf.puc-rio.br/ftp\\_pub/lfm/ftool300bridge.ftl](http://www.tecgraf.puc-rio.br/ftp_pub/lfm/ftool300bridge.ftl)





Users of this **educational version** are free to apply and re-distribute the program as they wish. However, neither the author nor the PUC-Rio University or any other related institution is responsible for the incorrect use of the program and its results. The author and PUC-Rio have no legal responsibility for any damage caused directly or indirectly to a person or a company, resulting from the application of any information or the utilization of the program. Users are responsible for all conclusions made through the program. There is no commitment of satisfactory performance or any kind of warranty.

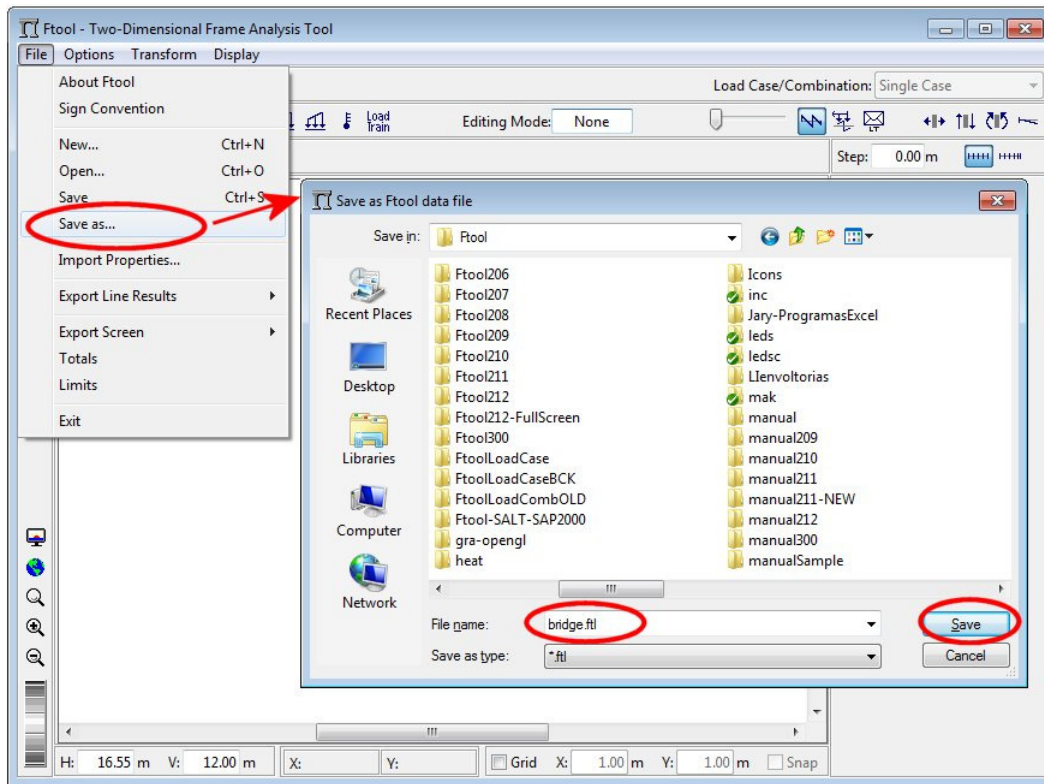


# Table of Contents

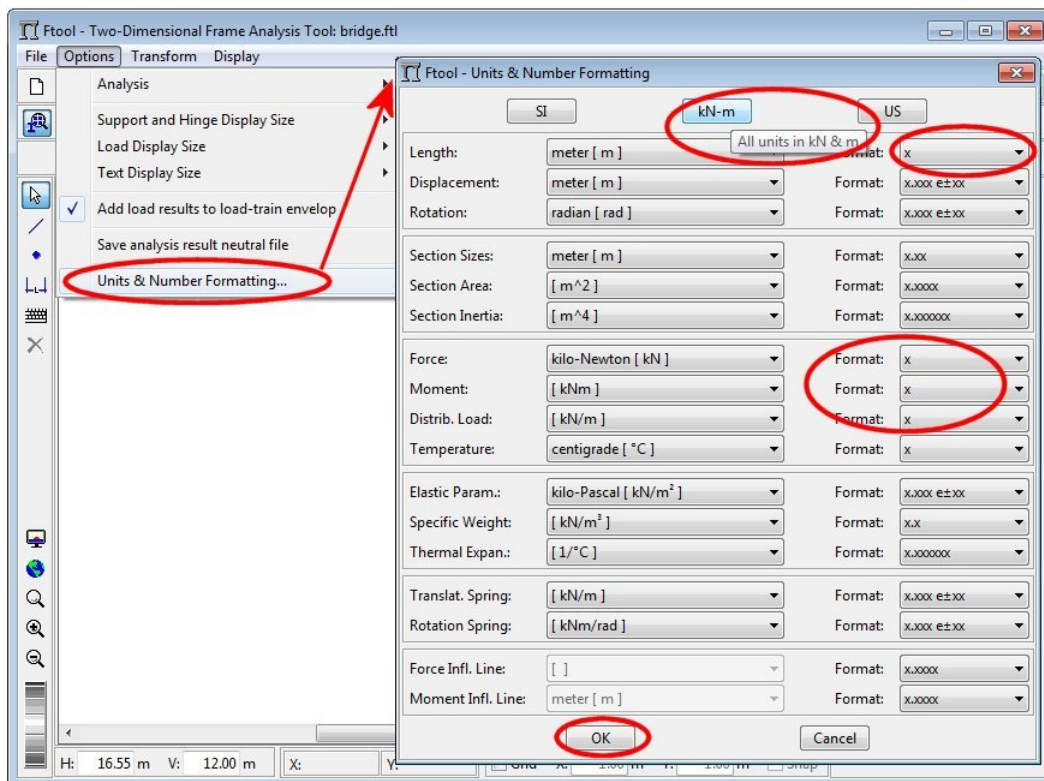
- Create a file for the bridge model (command "Save as... ") ..... 4
- Specification of units and number formatting ..... 4
- Insertion of bridge beam in keyboard mode ..... 5
- Cancel member insertion to fit model image on screen ..... 5
- Fit image of model on screen ..... 6
- Insertion of first bridge column in keyboard mode ..... 6
- Insertion of second bridge column in keyboard mode ..... 7
- Insertion of third bridge column in keyboard mode ..... 7
- Insertion of fourth bridge column in keyboard mode ..... 8
- Cancel insertion of members ..... 8
- Leave keyboard mode and select area for zooming in ..... 9
- Mouse clicks for insertion of dimension line at bridge central span ..... 9
- Dimension line at bridge central span ..... 10
- Insertion of other dimension lines ..... 10
- Turn off display of dimension lines to simplify image ..... 11
- Creation of new material ..... 11
- Selection of material type and name; and assignment to all members ..... 12
- Creation of cross-section for bridge columns ..... 12
- Select rectangular cross-section for the bridge columns ..... 13
- Specify rectangular cross-section parameters and apply to bridge columns ..... 13
- Creation of cross-section for bridge beam members ..... 14
- Select type and name of cross-section for bridge beam members ..... 14
- Specify cross-section parameters and apply to bridge beam members ..... 15
- Definition of fixed support and assignment to inferior nodes ..... 15
- Definition of simple support and assignment to beam end nodes ..... 16
- Creation of uniformly distributed load (dead load) for bridge beam ..... 16
- Definition of dead load value and assignment to beam members ..... 17
- Select small display size for supports ..... 17
- Select small display size for loads ..... 18
- Specification of two vehicle live loads (load-trains) ..... 18
- Creation of highway load-train with four axes ..... 19
- Specification of highway load-train length, values of concentrated forces, and values of interior and exterior live loads (population of small vehicles) ..... 19
- Creation of railroad load-train ..... 20
- Specification of railroad load-train length, values of concentrated forces, and values of full and empty car distributed loads ..... 20
- Select result visualization step (2 m) and set transversal display of result values ..... 21
- Select cross-section for visualization of shear force influence line result ..... 21
- Visualization of shear force influence line result and critical positions (that cause minimum and maximum) of highway load-train ..... 22
- Visualization of bending moment influence line result and critical positions (that cause minimum and maximum) of highway load-train ..... 22
- Visualization of axial force influence line result and critical positions (that cause minimum and maximum) of railroad load-train ..... 23
- Visualization of shear force envelops for highway load-train (including effect of permanent load) ..... 23
- Visualization of bending moment envelops for railroad load-train (including effect of permanent load) ..... 24
- Visualization of bending moment envelops for railroad load-train (excluding effect of permanent load) ..... 24
- Consulting step results values along central beam member of bending moment envelops for railroad load-train (excluding effect of permanent load) ..... 25



### Create a file for the bridge model (command "Save as... ")

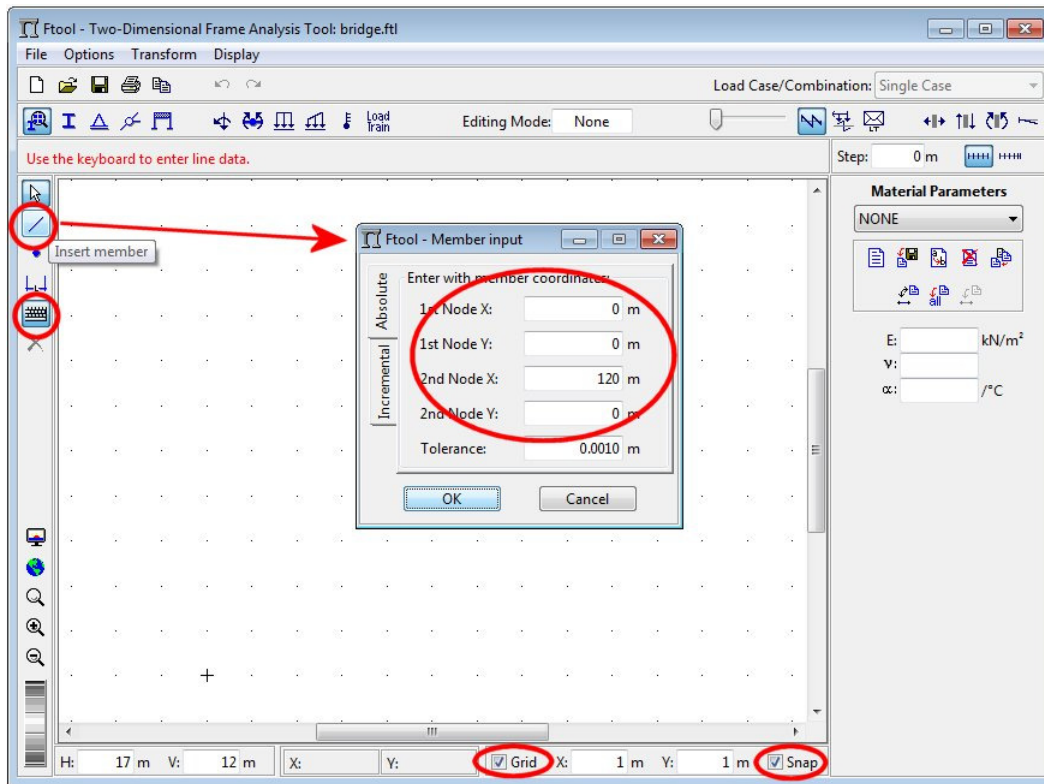


### Specification of units and number formatting

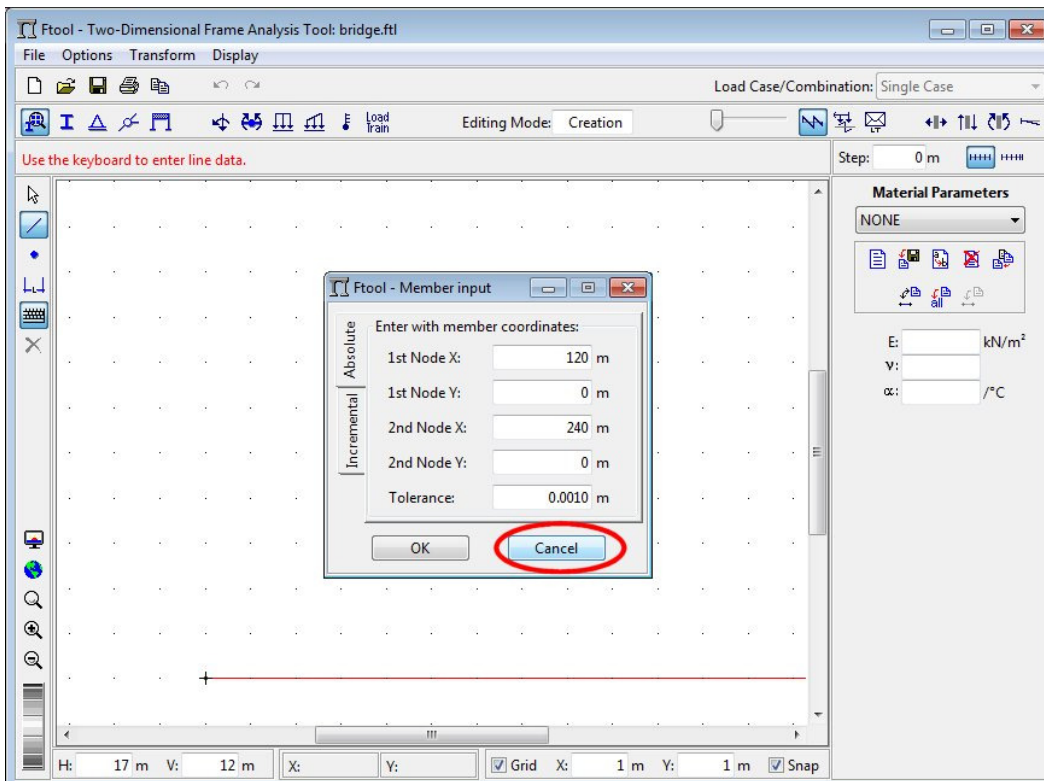




### Insertion of bridge beam in keyboard mode

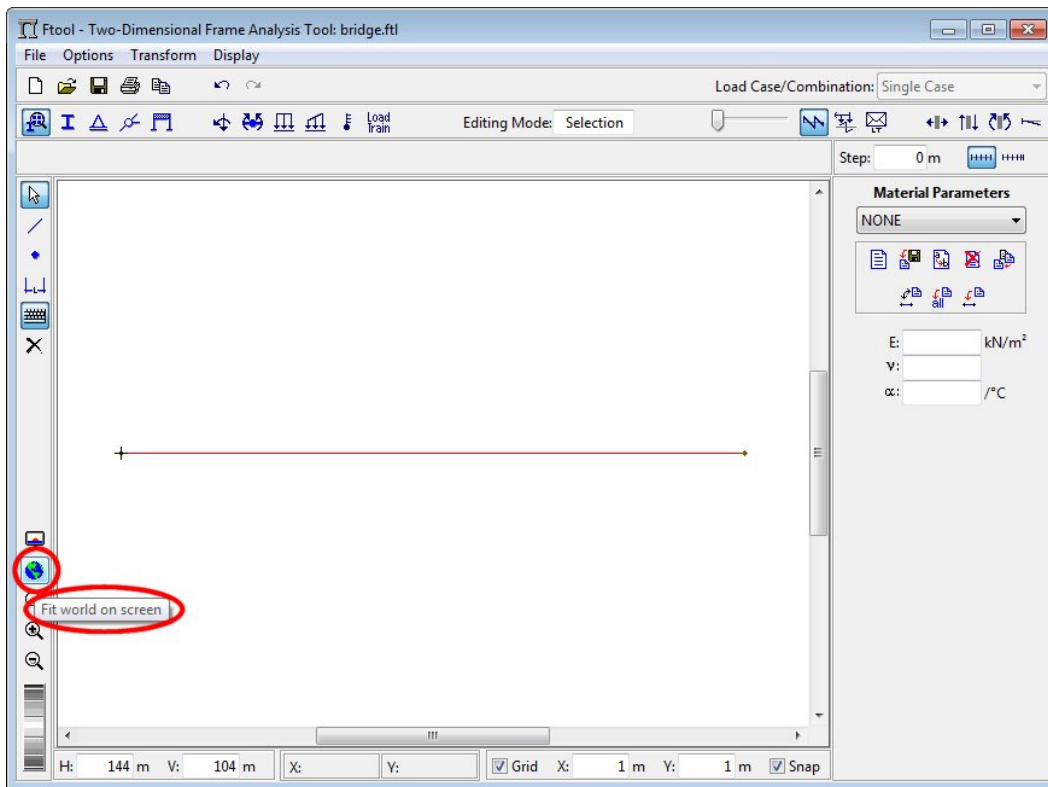


### Cancel member insertion to fit model image on screen

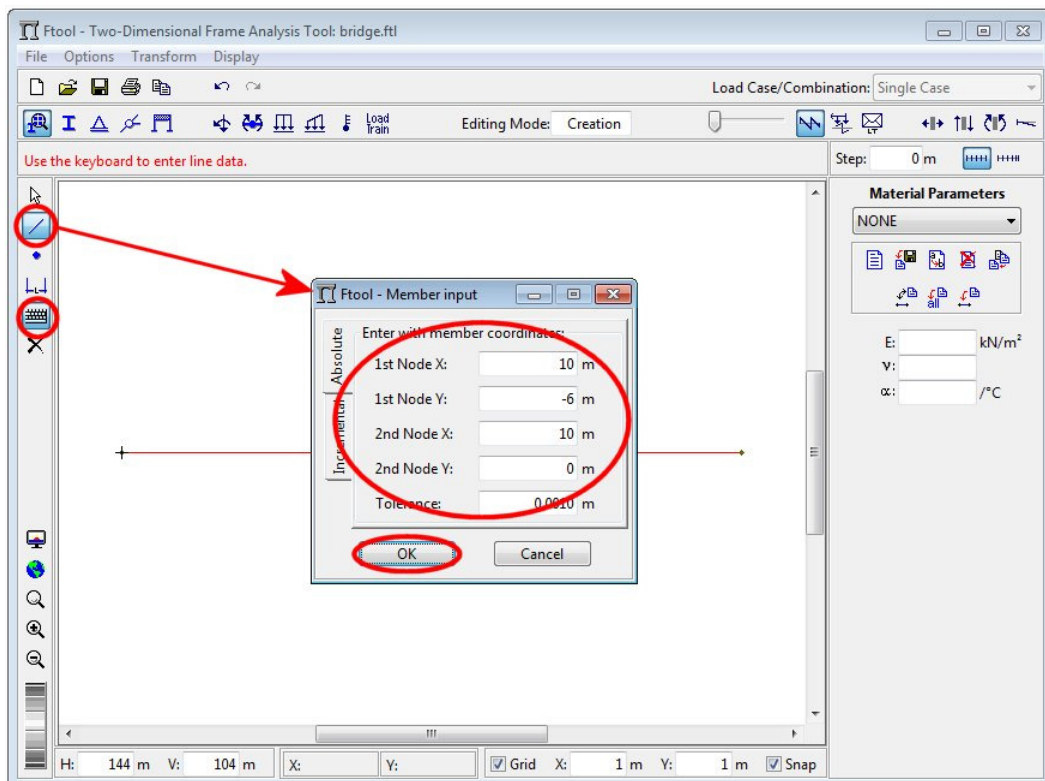




### Fit image of model on screen



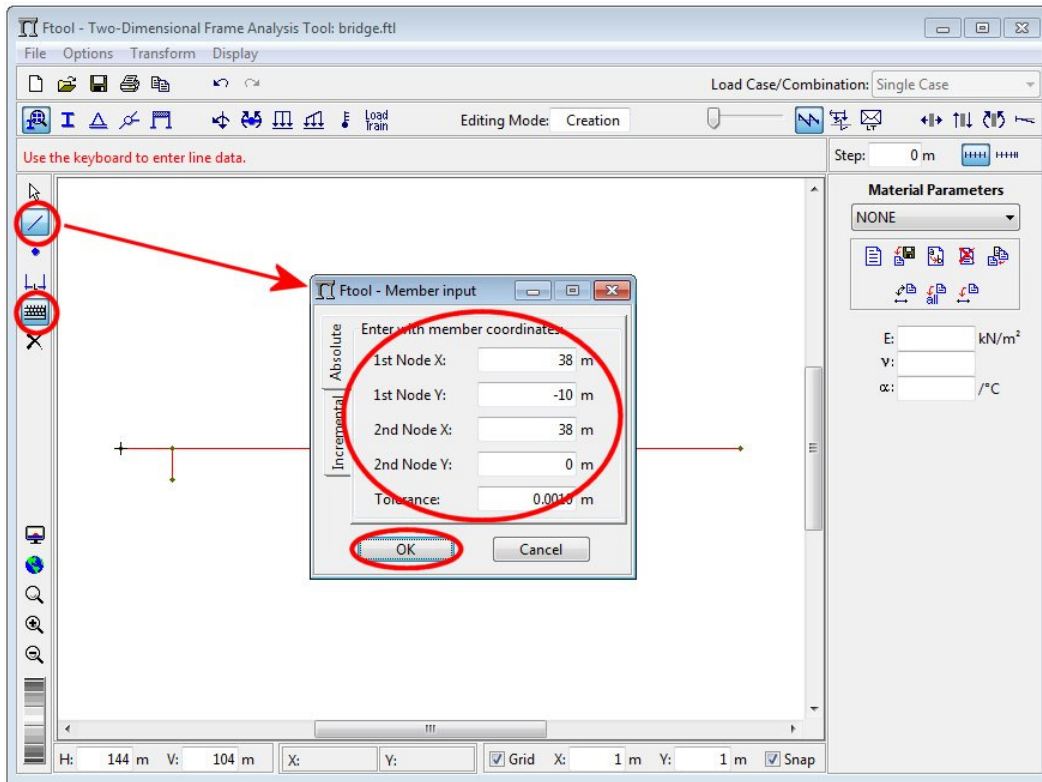
### Insertion of first bridge column in keyboard mode



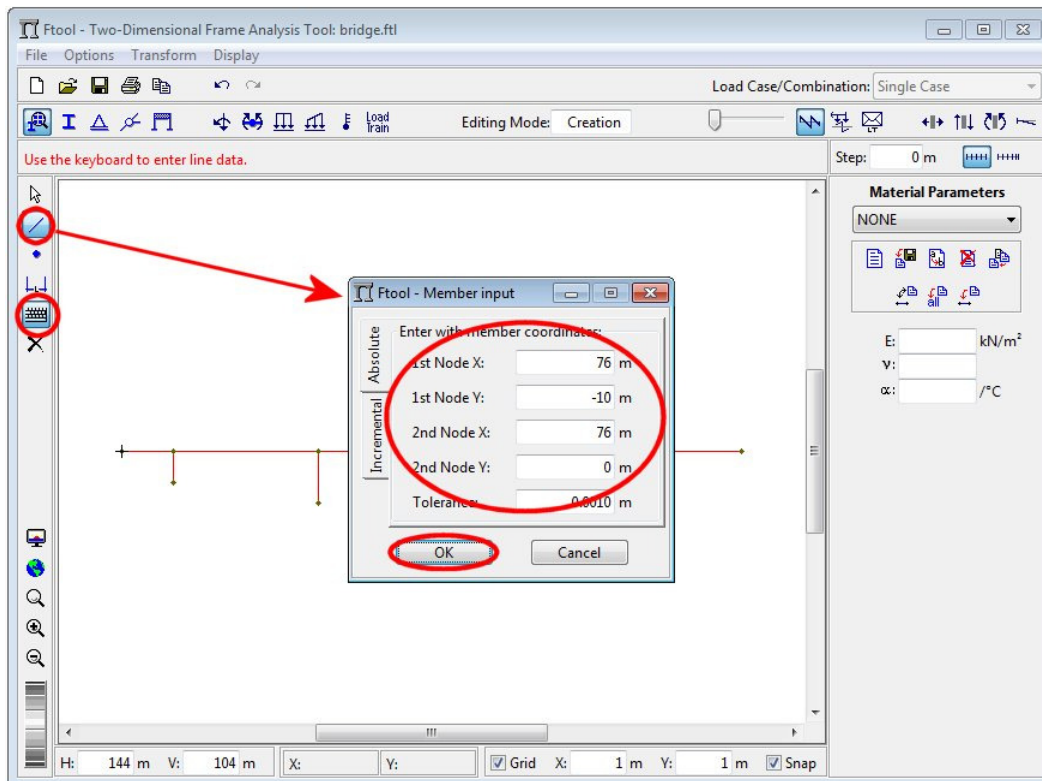




### Insertion of second bridge column in keyboard mode

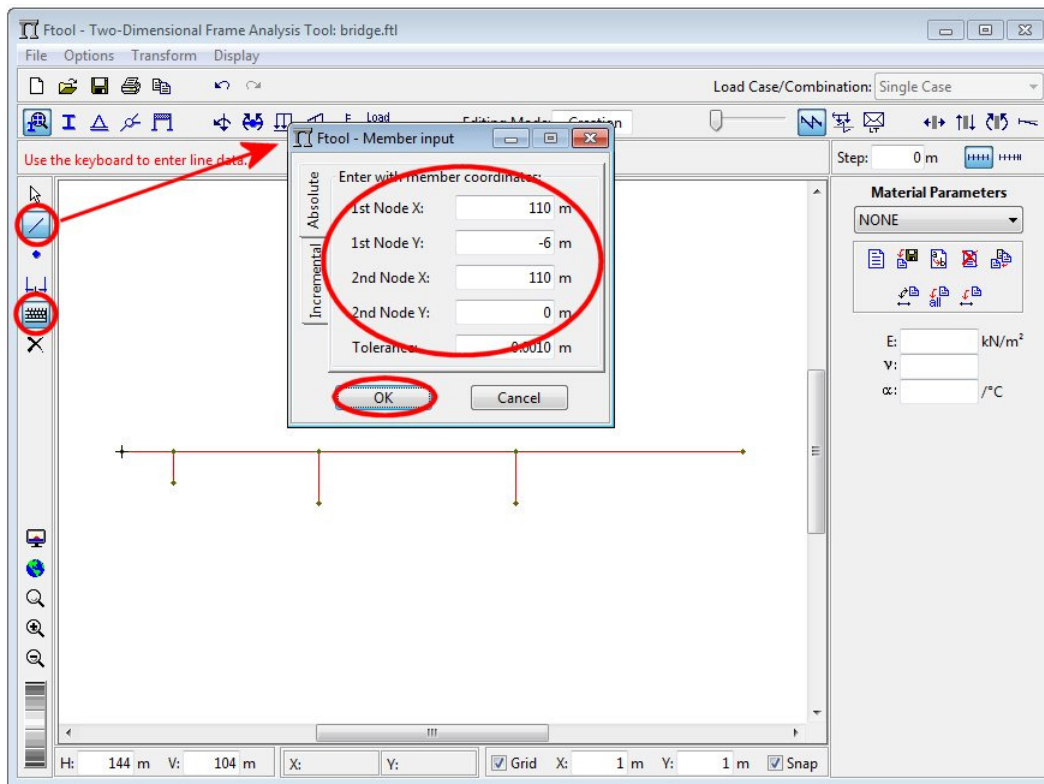


### Insertion of third bridge column in keyboard mode

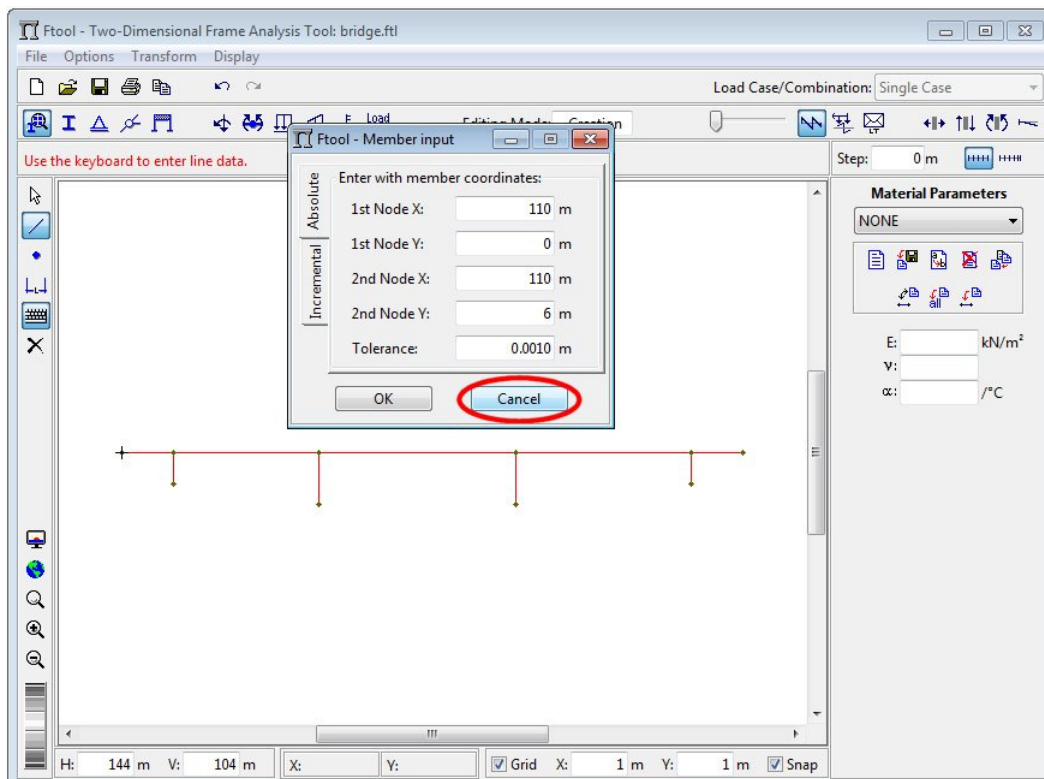




### Insertion of fourth bridge column in keyboard mode



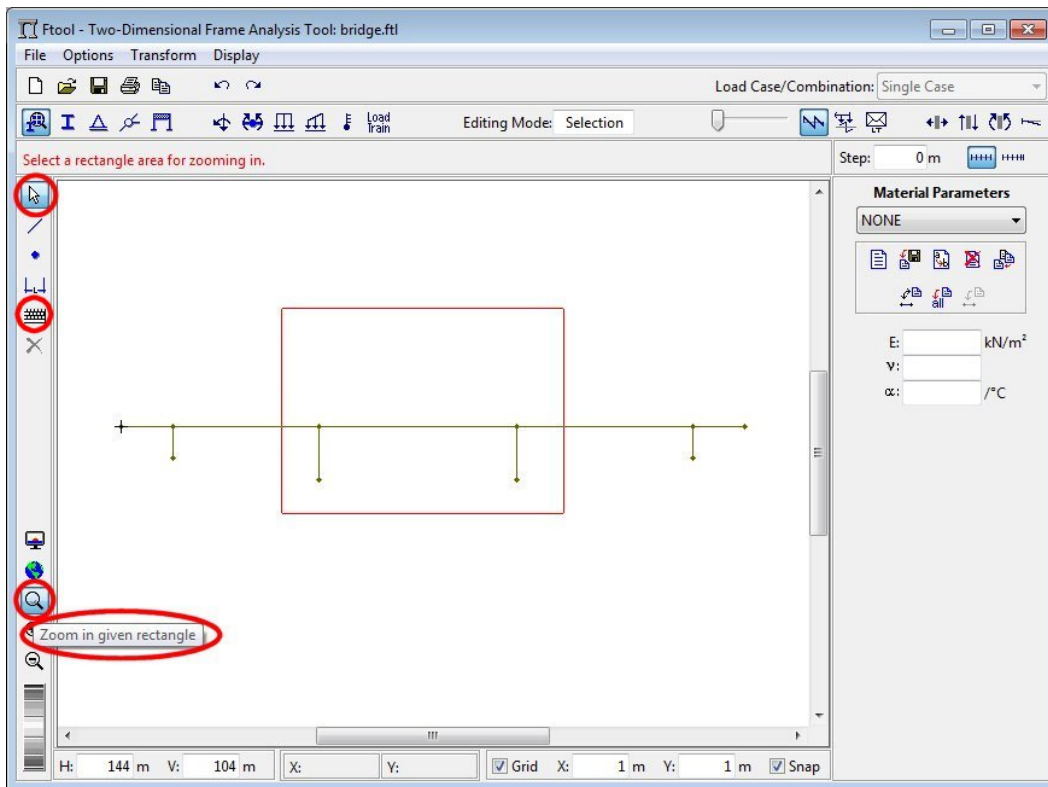
### Cancel insertion of members



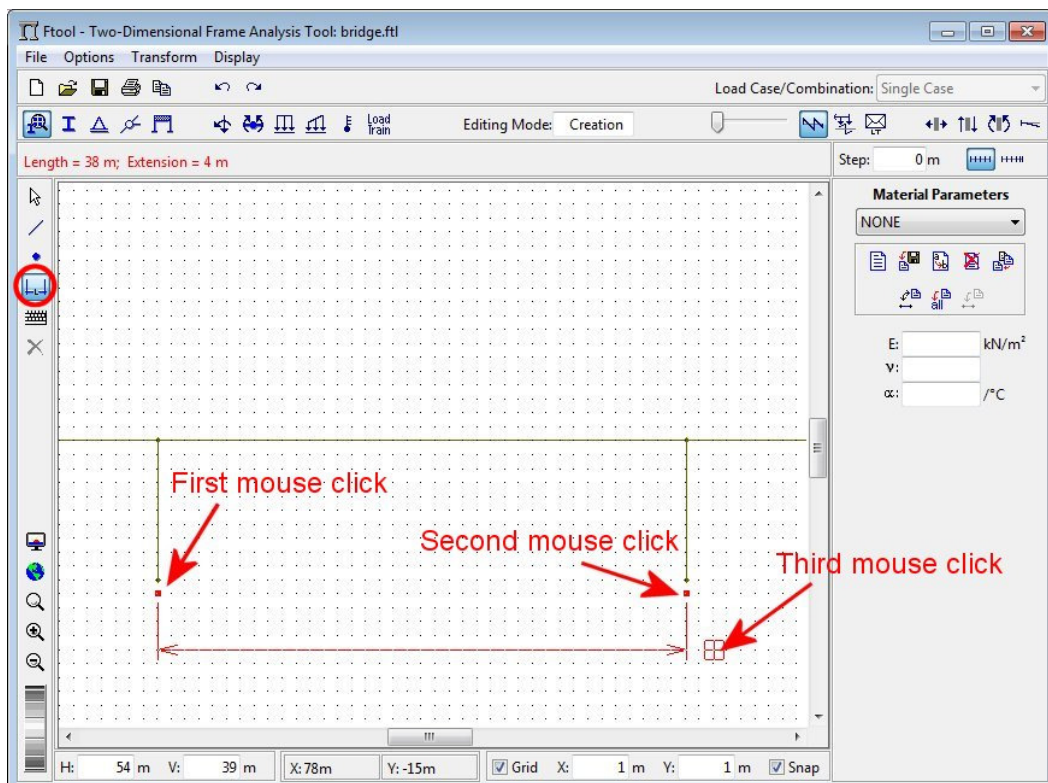




### Leave keyboard mode and select area for zooming in

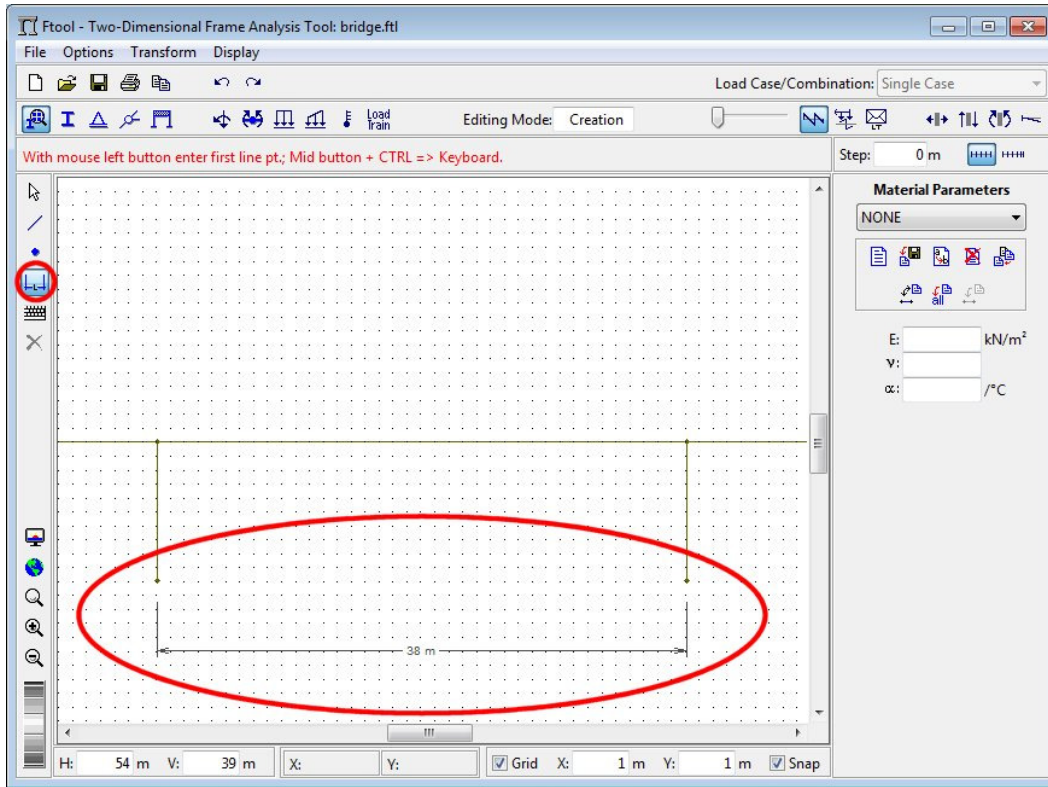


### Mouse clicks for insertion of dimension line at bridge central span

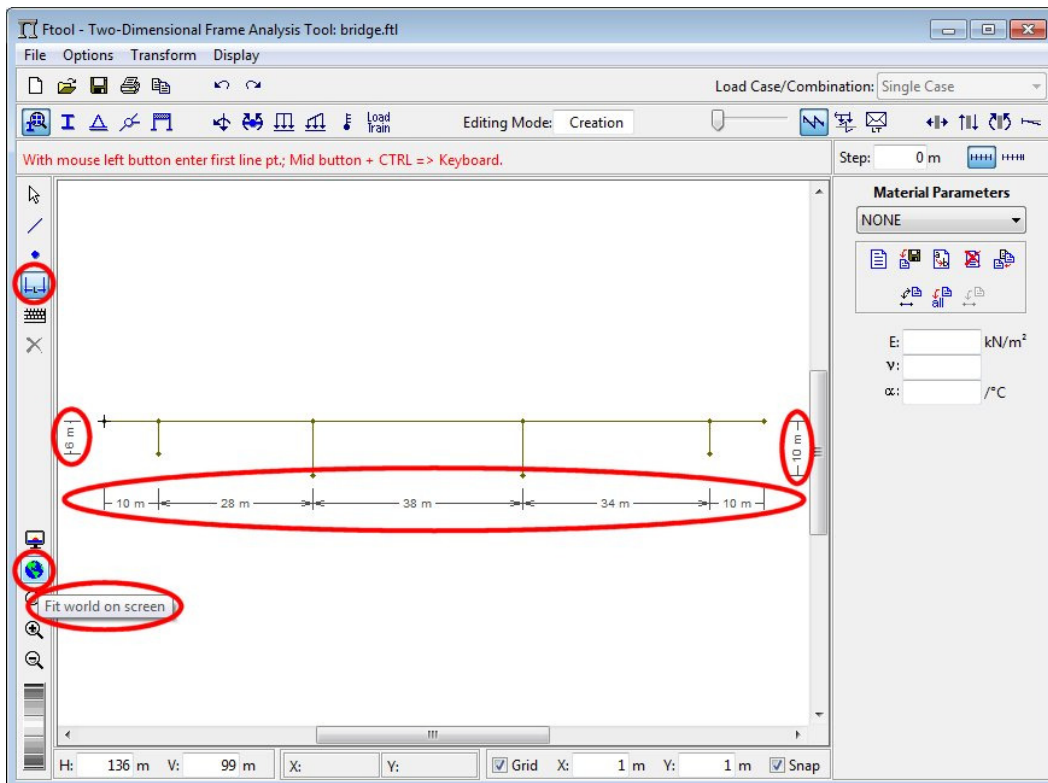




## Dimension line at bridge central span

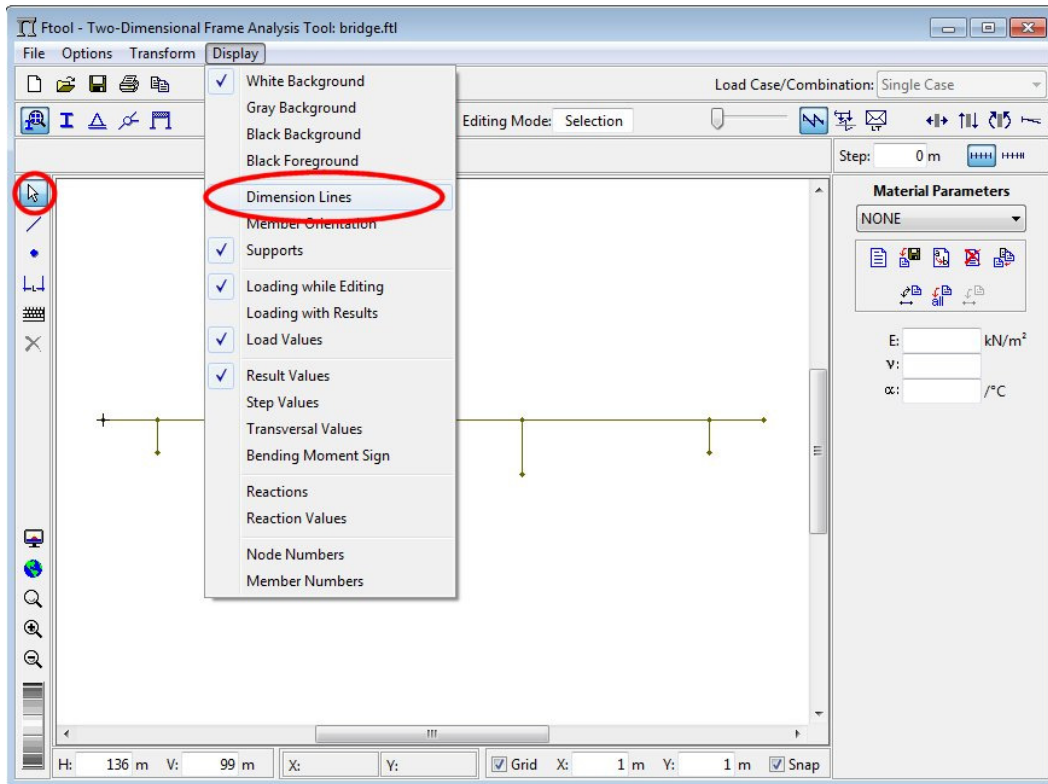


## Insertion of other dimension lines

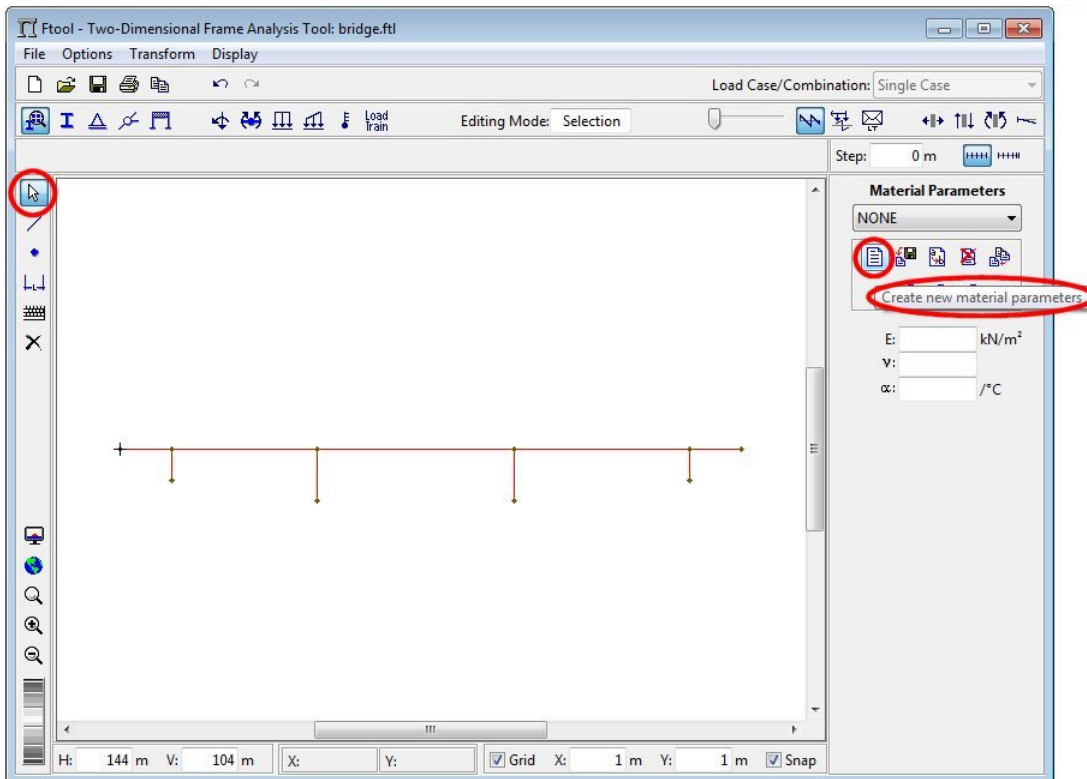




## Turn off display of dimension lines to simplify image

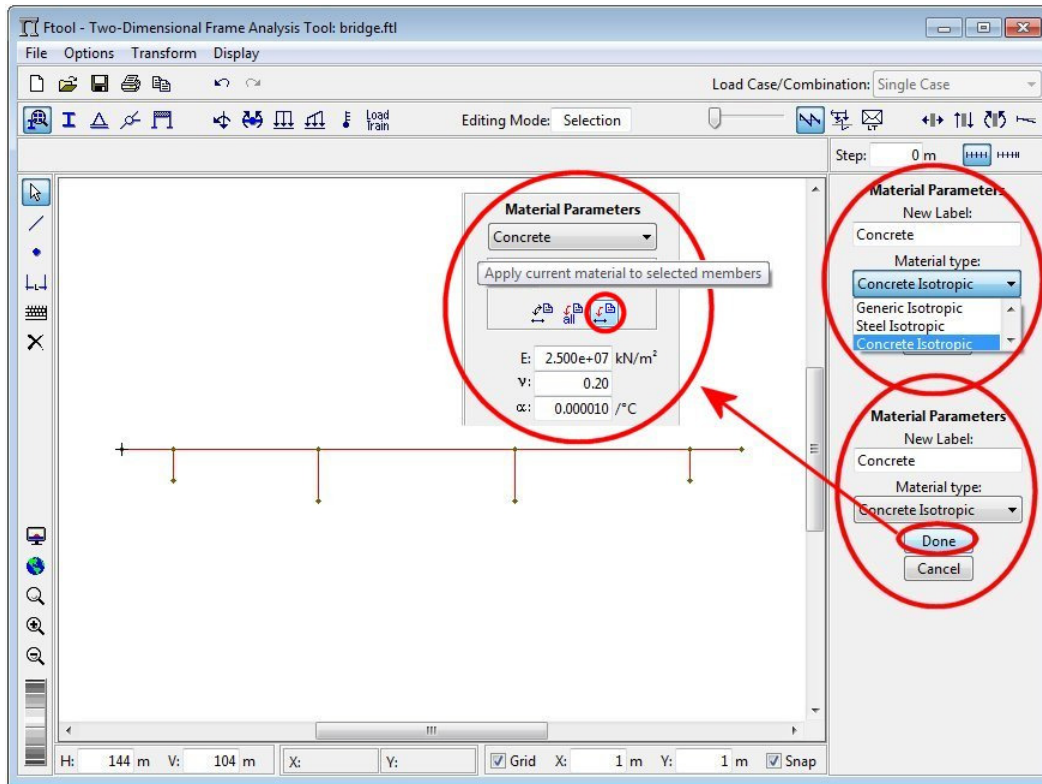


## Creation of new material

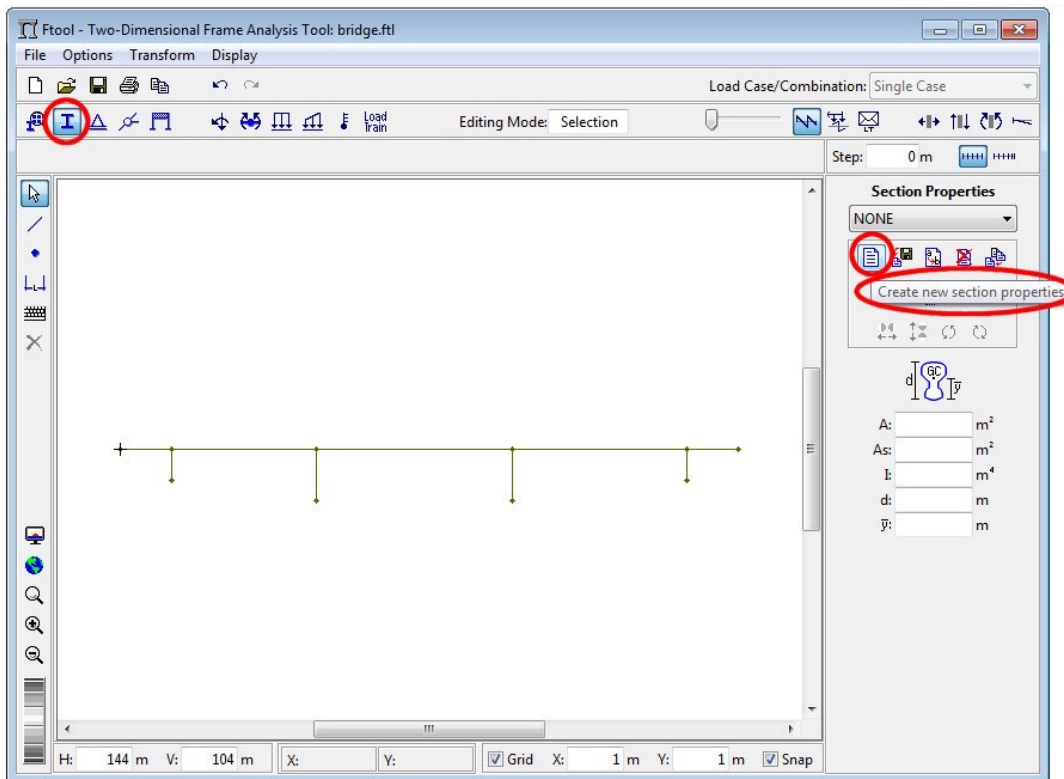




### Selection of material type and name; and assignment to all members



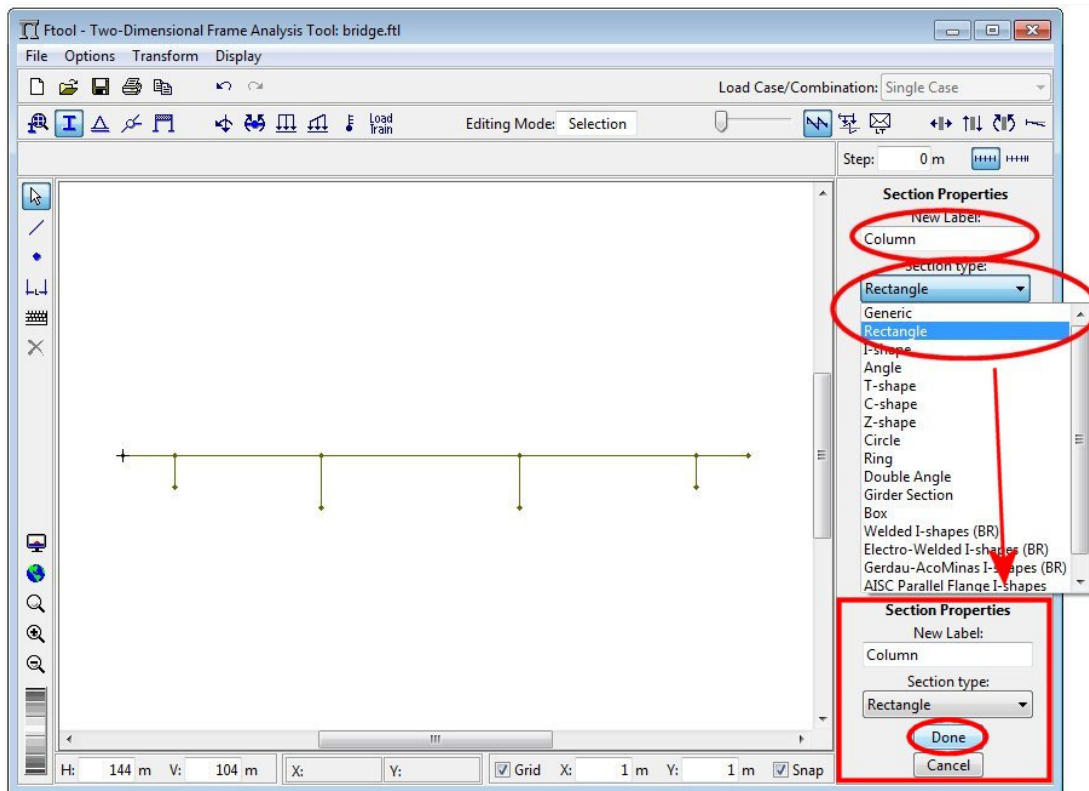
### Creation of cross-section for bridge columns



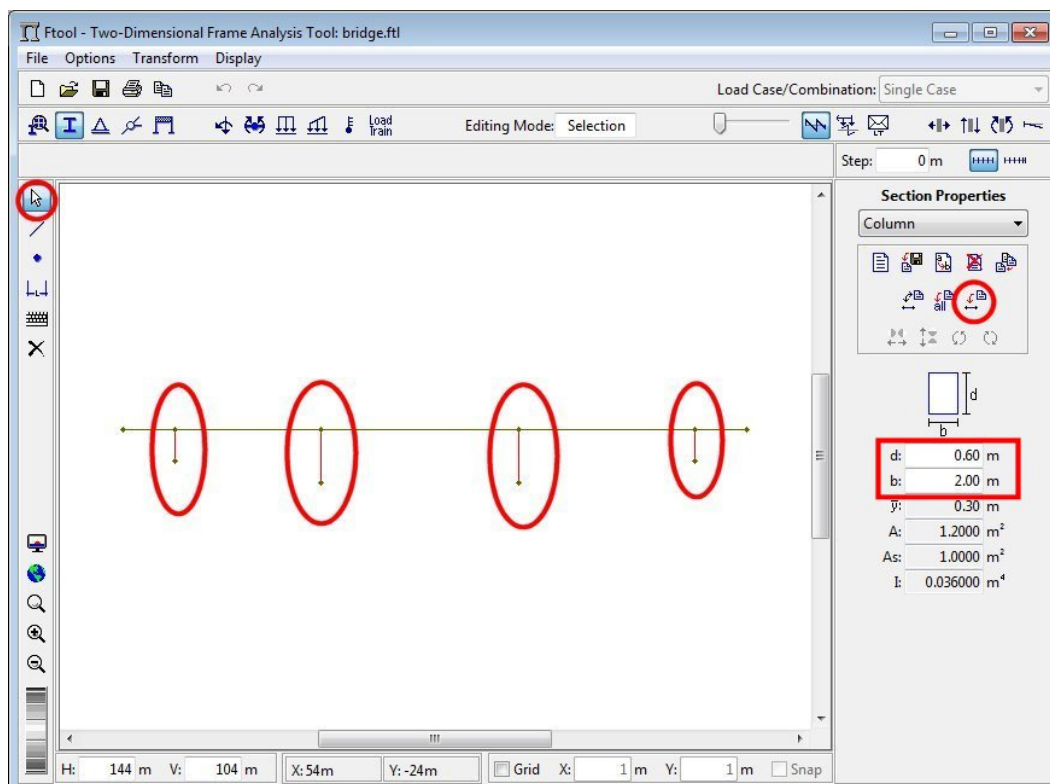




### Select rectangular cross-section for the bridge columns

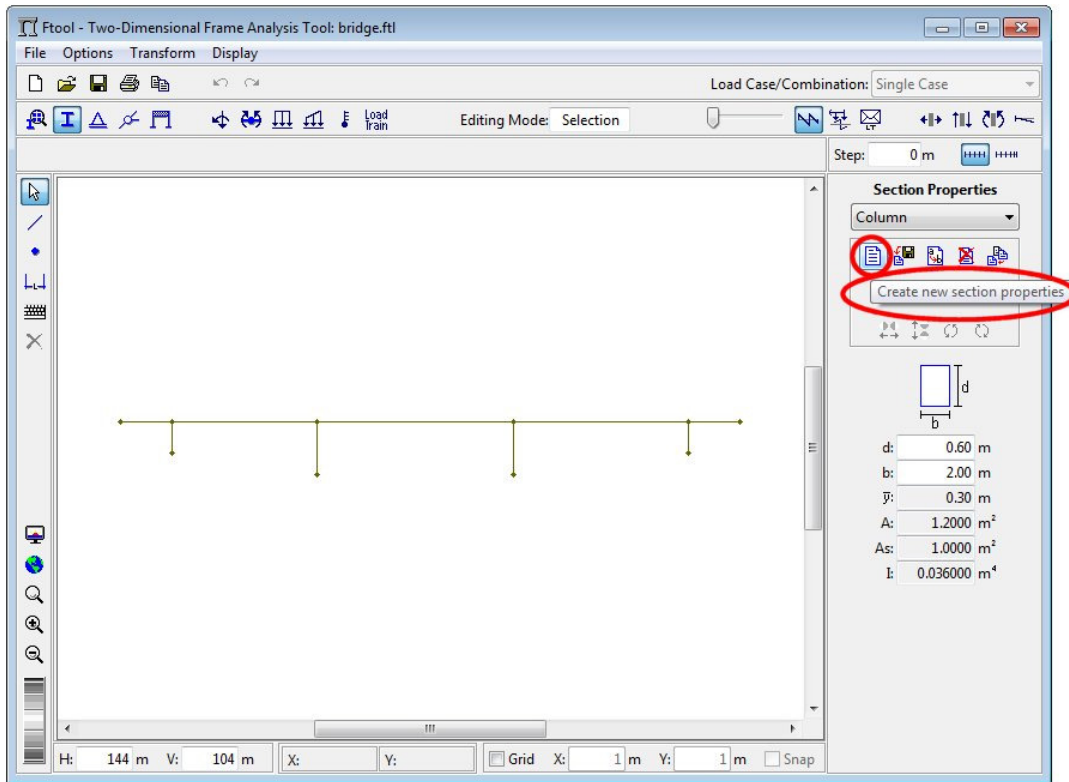


### Specify rectangular cross-section parameters and apply to bridge columns

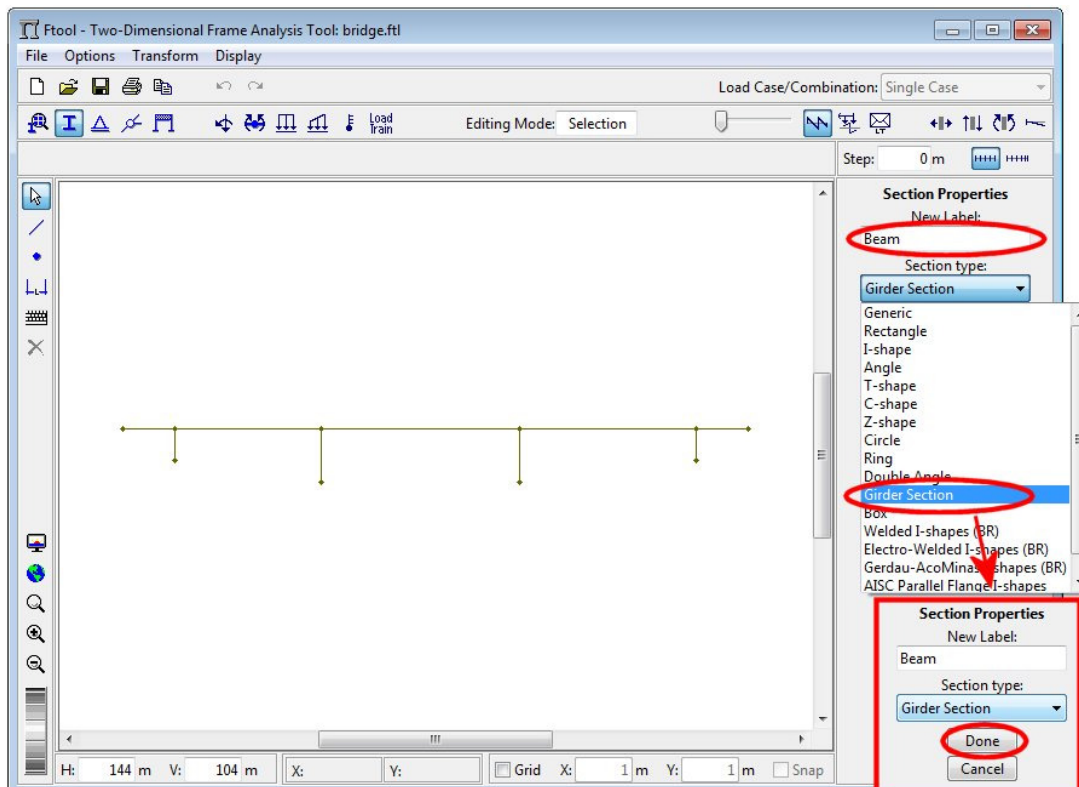




## Creation of cross-section for bridge beam members



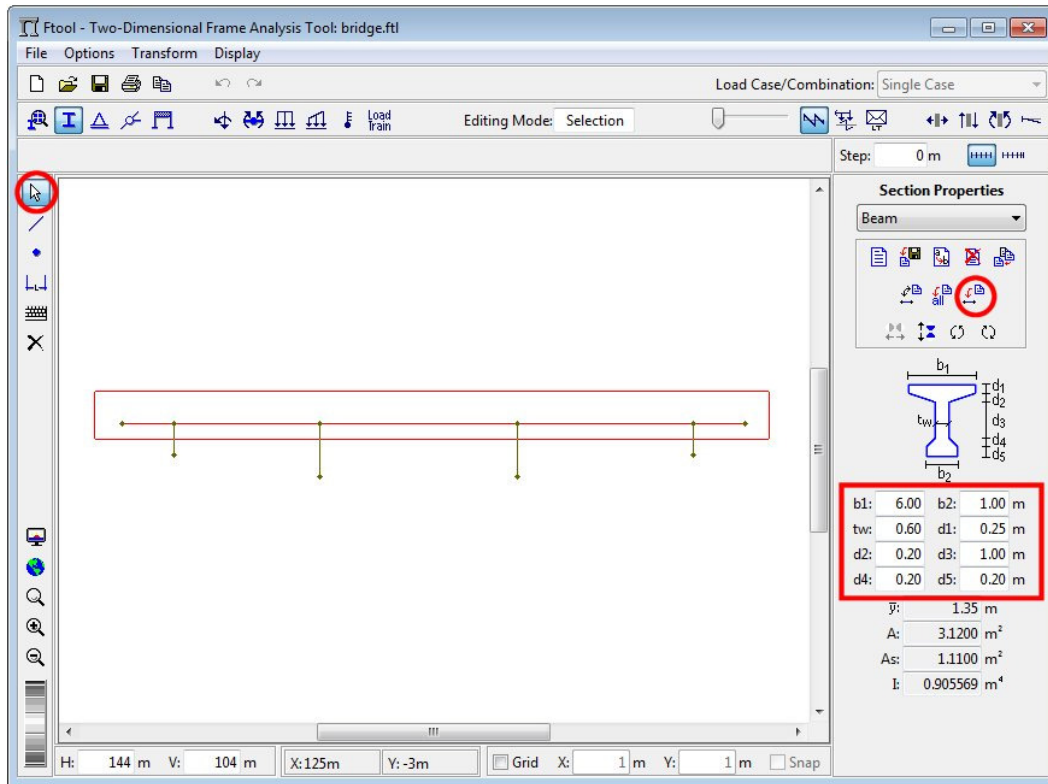
## Select type and name of cross-section for bridge beam members



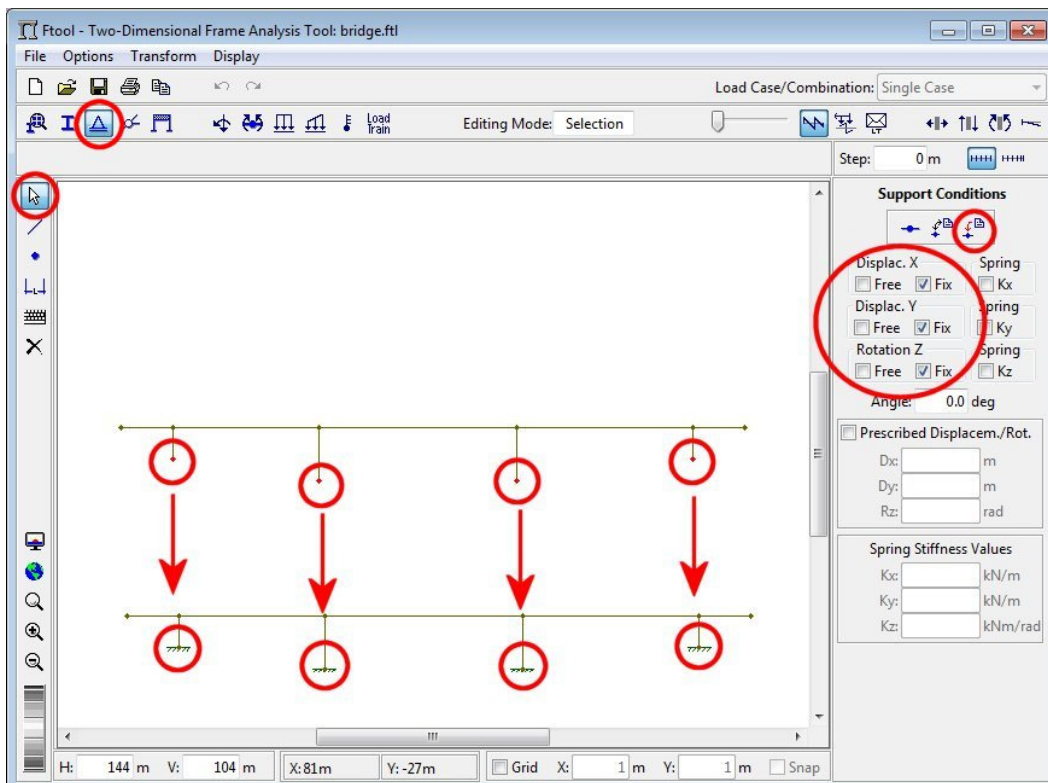




### Specify cross-section parameters and apply to bridge beam members

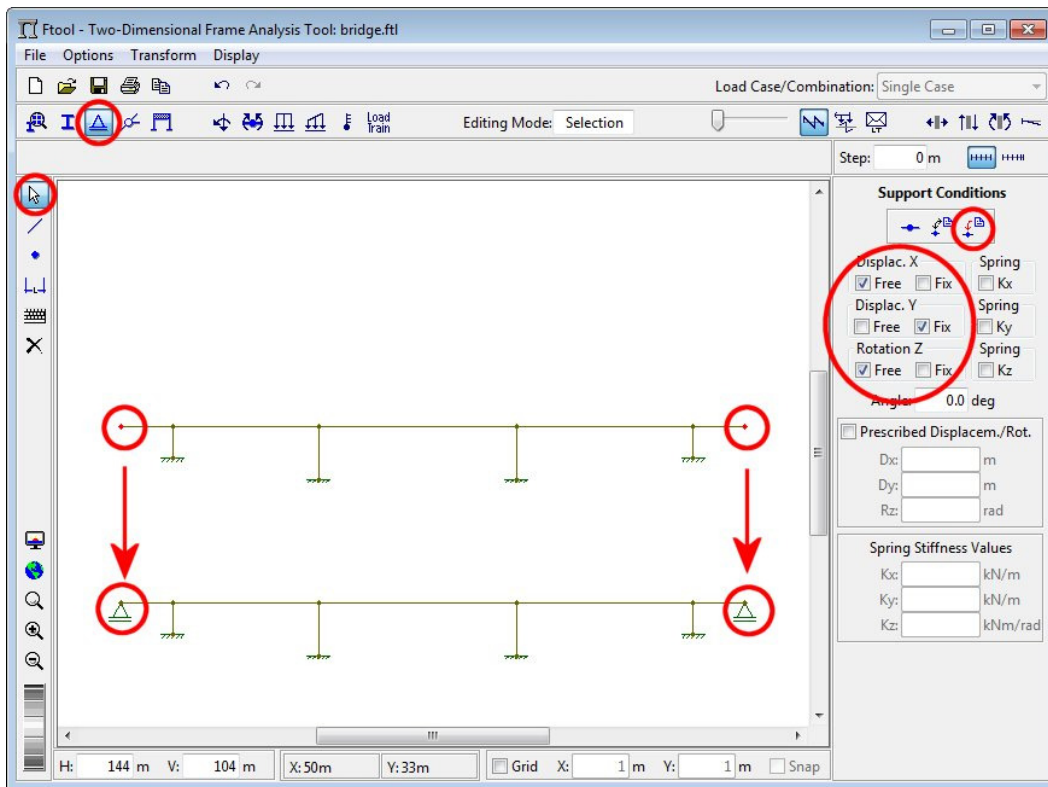


### Definition of fixed support and assignment to inferior nodes

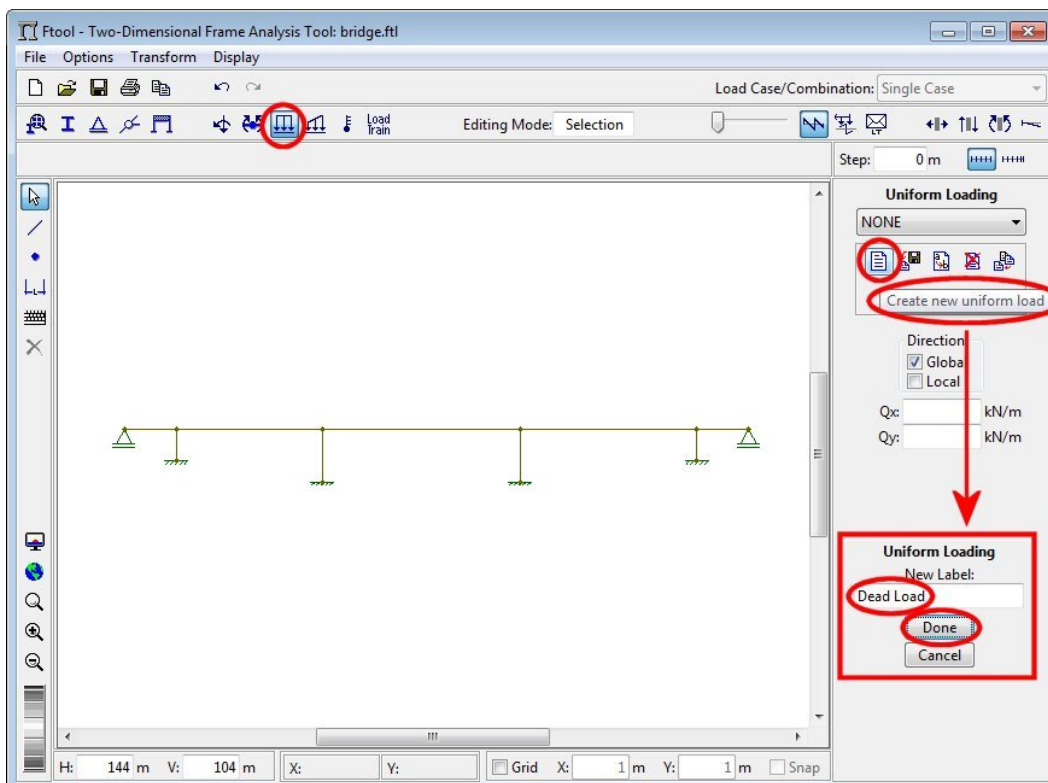




## Definition of simple support and assignment to beam end nodes

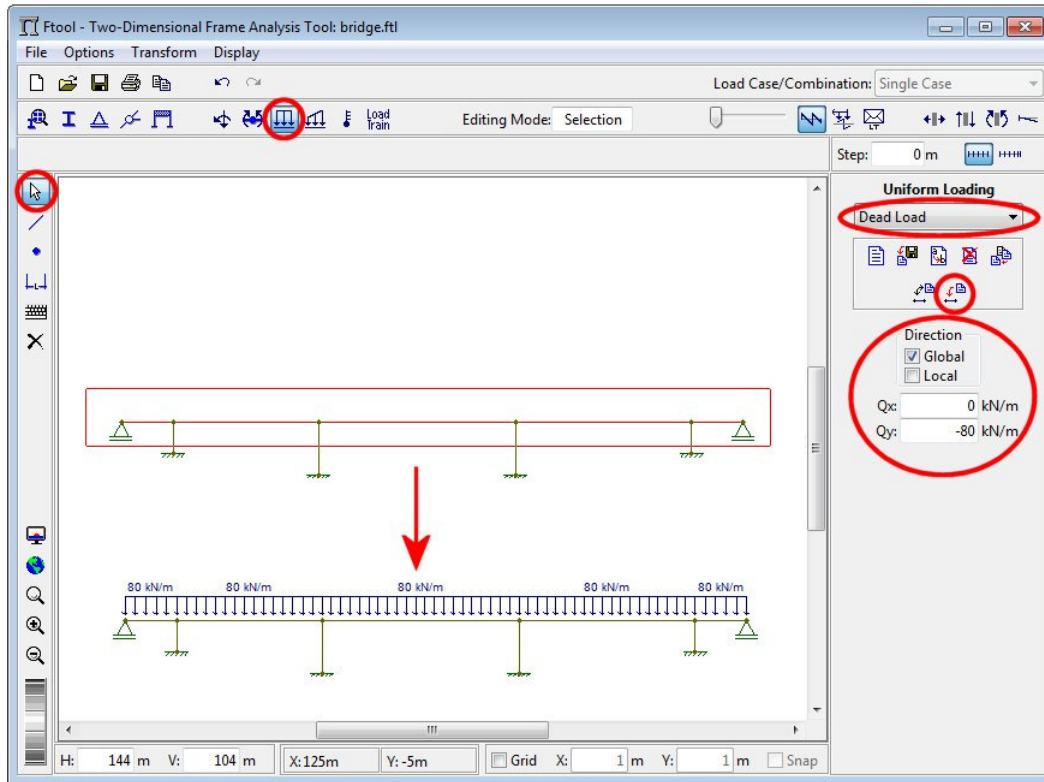


## Creation of uniformly distributed load (dead load) for bridge beam

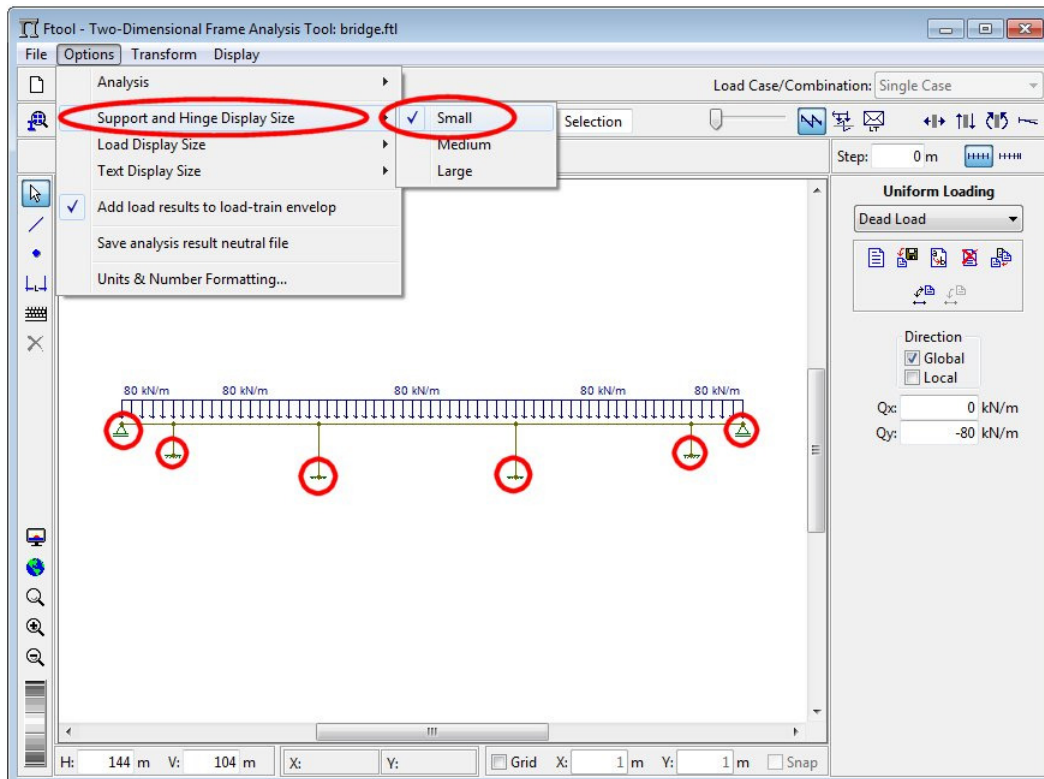




## Definition of dead load value and assignment to beam members

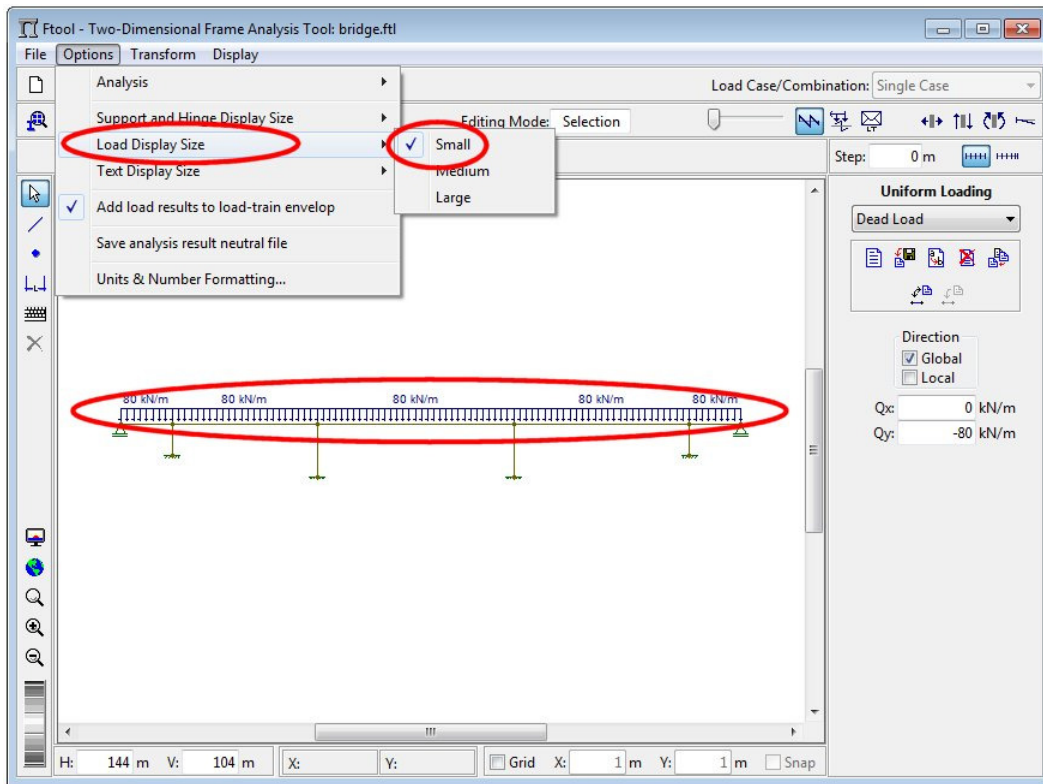


## Select small display size for supports

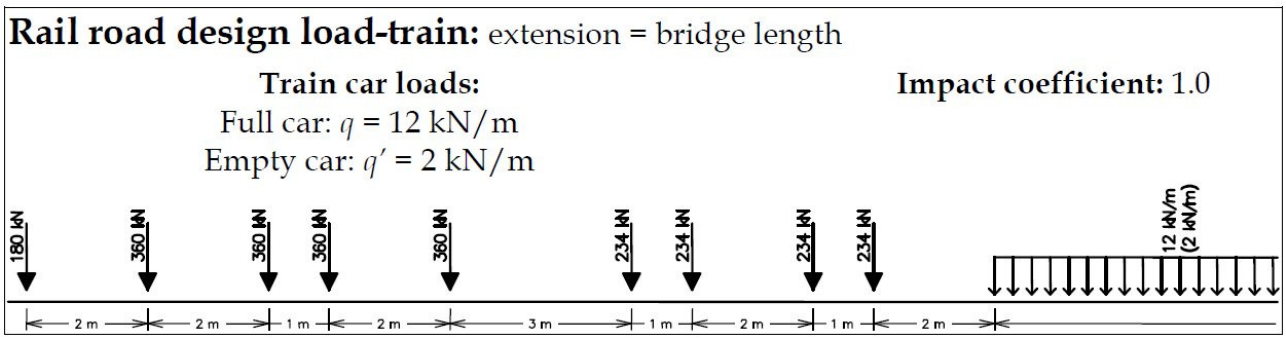
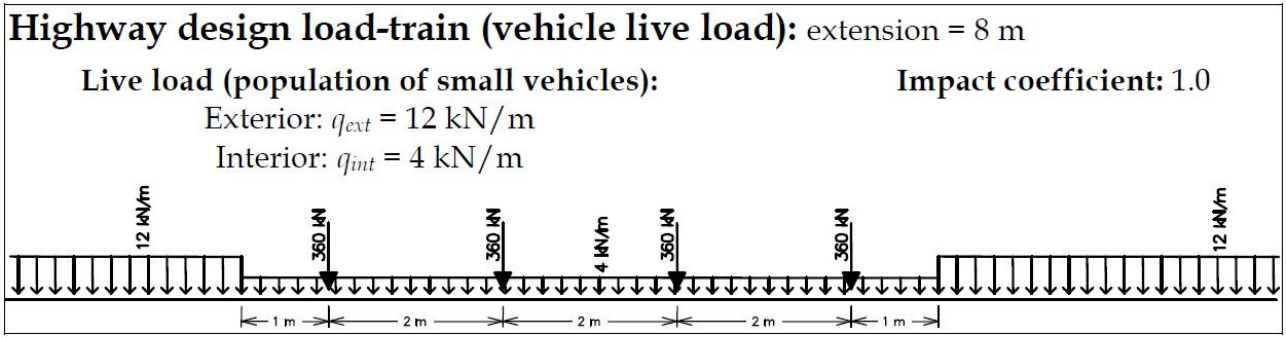




### Select small display size for loads



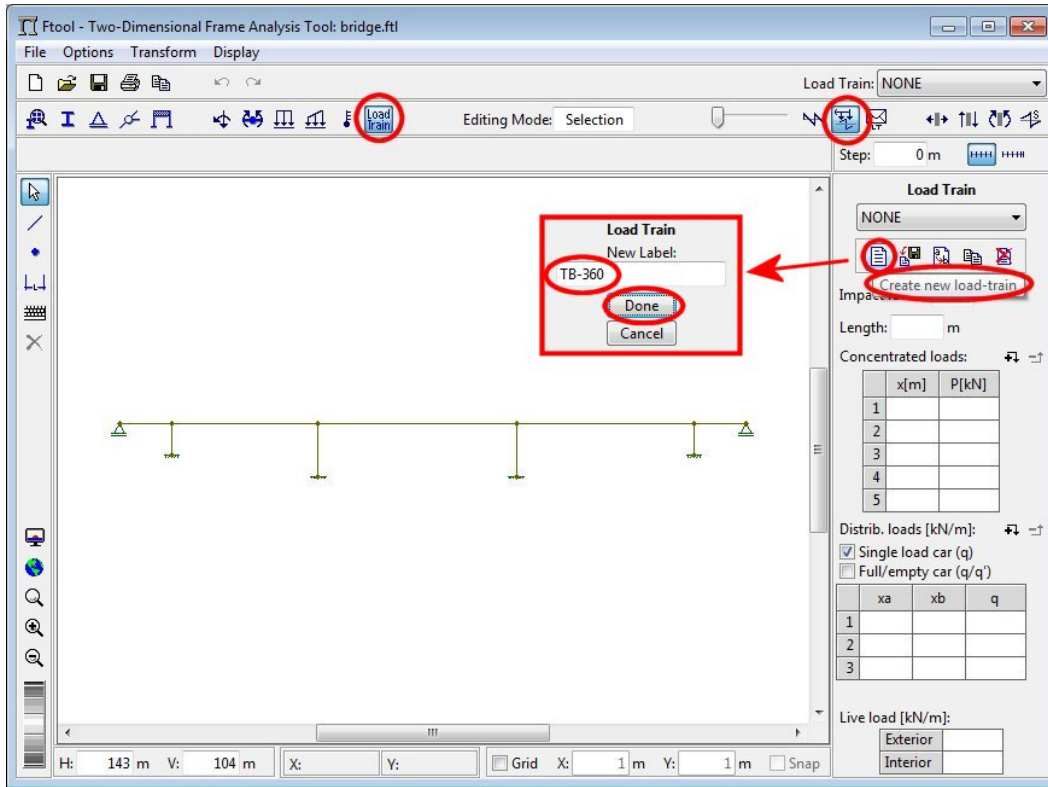
### Specification of two vehicle live loads (load-trains)



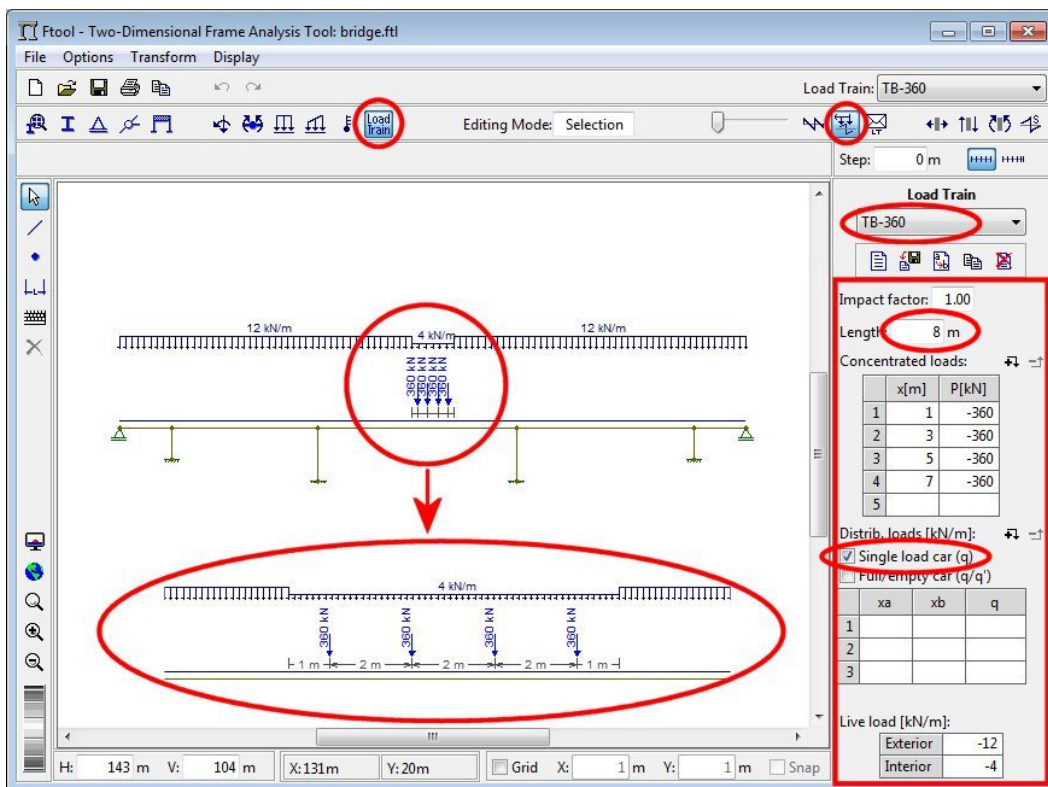




### Creation of highway load-train with four axes

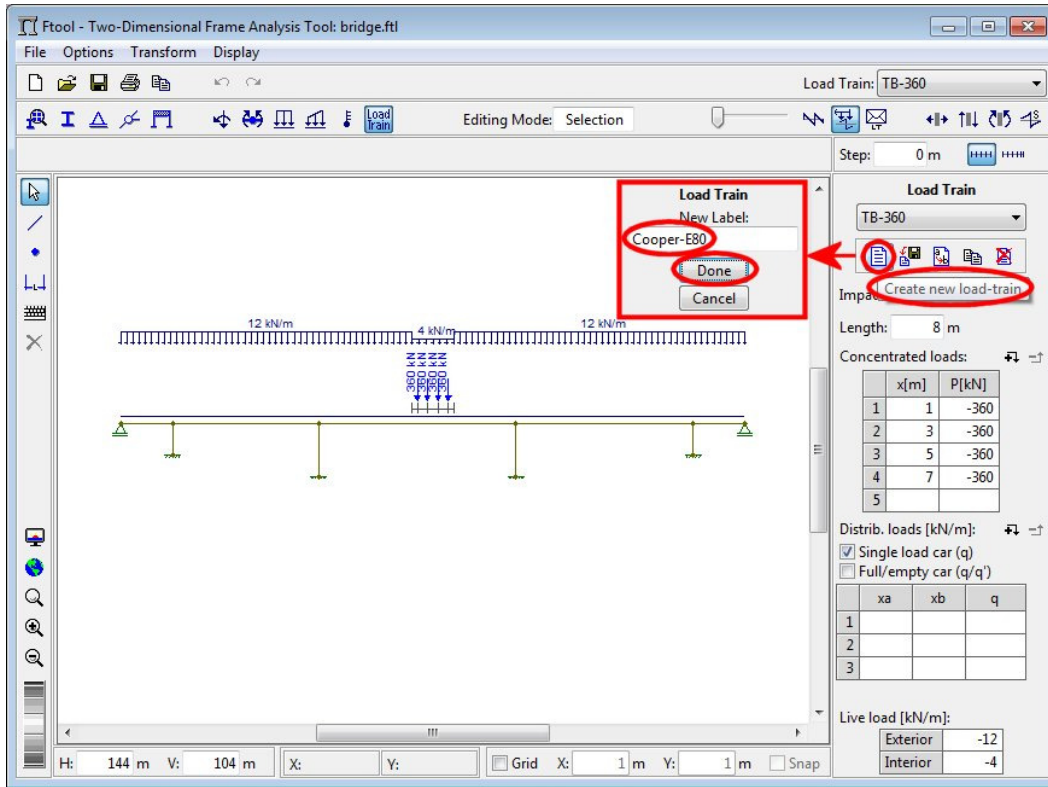


### Specification of highway load-train length, values of concentrated forces, and values of interior and exterior live loads (population of small vehicles)

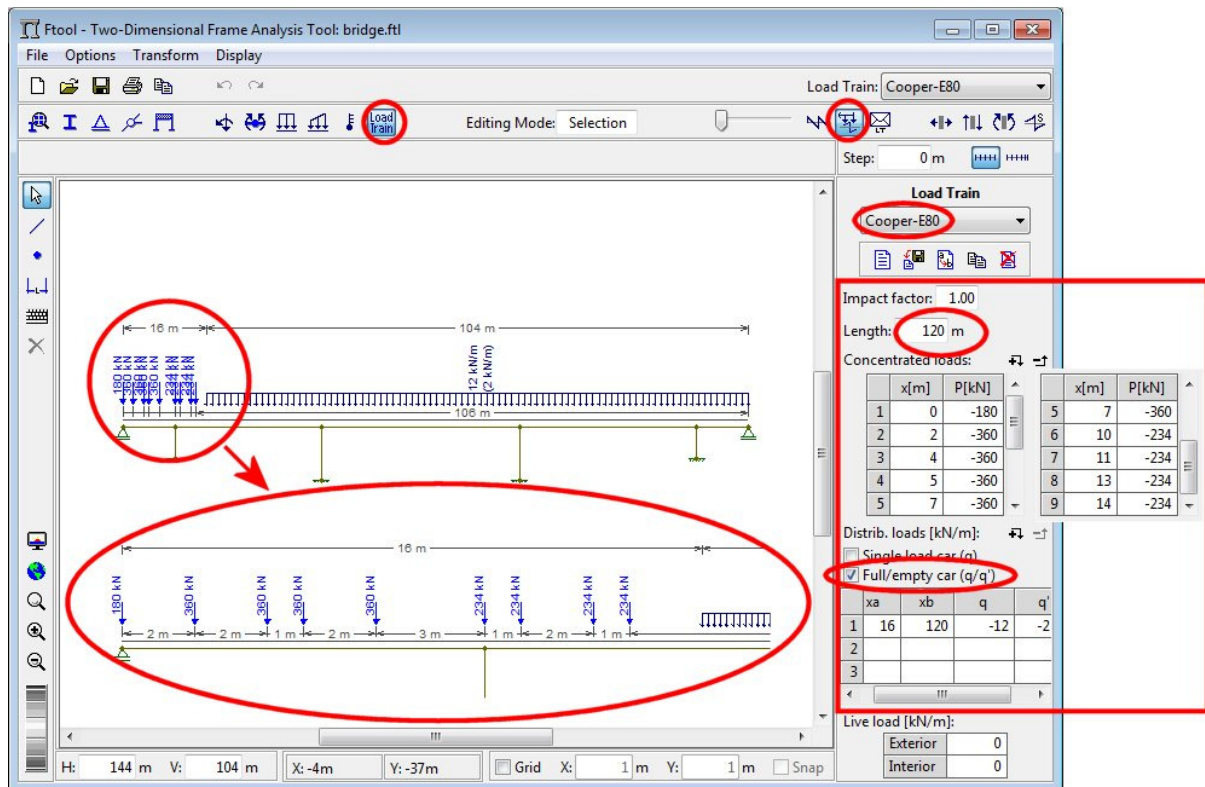




### Creation of railroad load-train



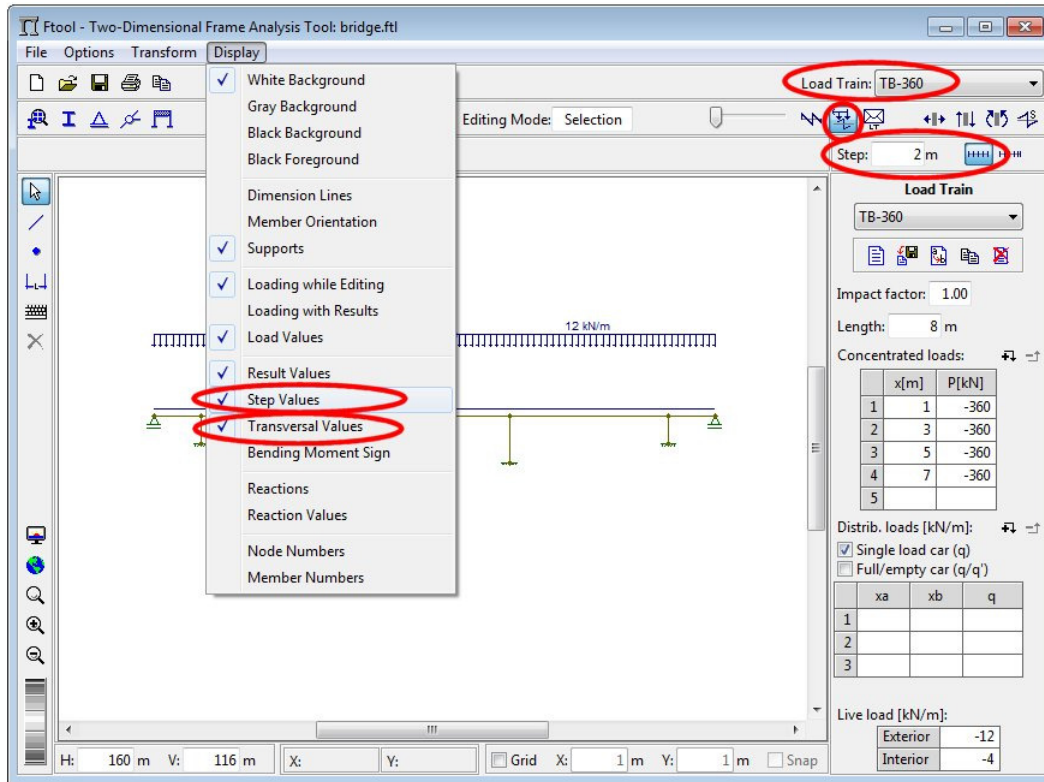
### Specification of railroad load-train length, values of concentrated forces, and values of full and empty car distributed loads



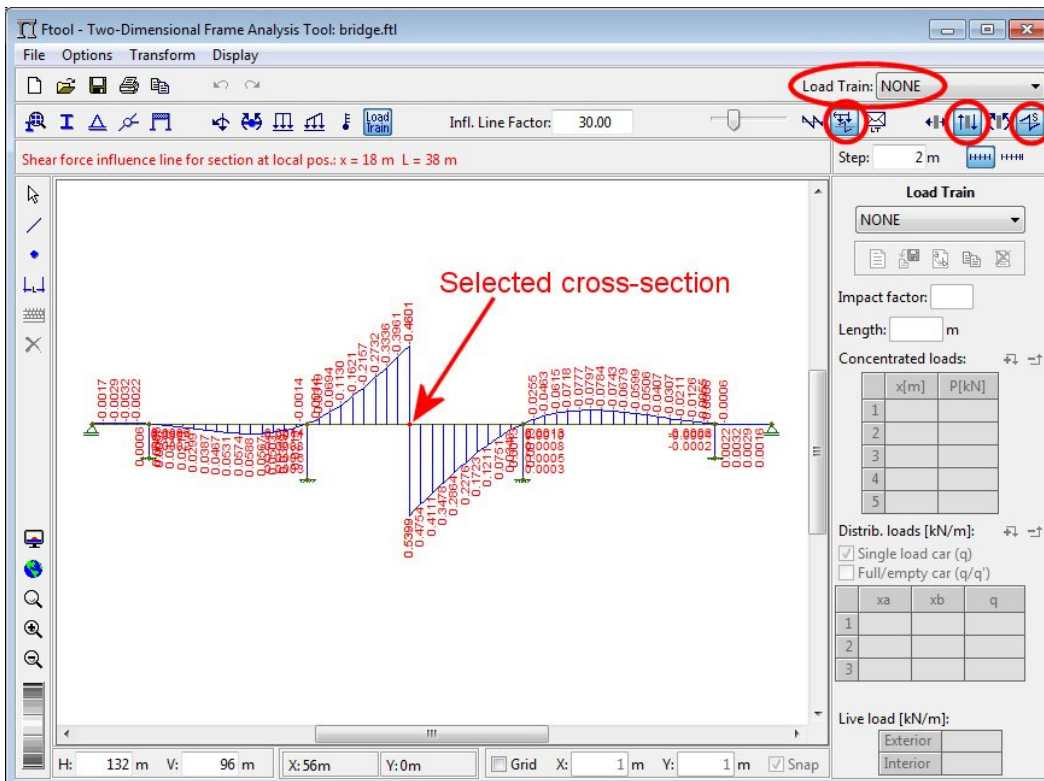




### Select result visualization step (2 m) and set transversal display of result values

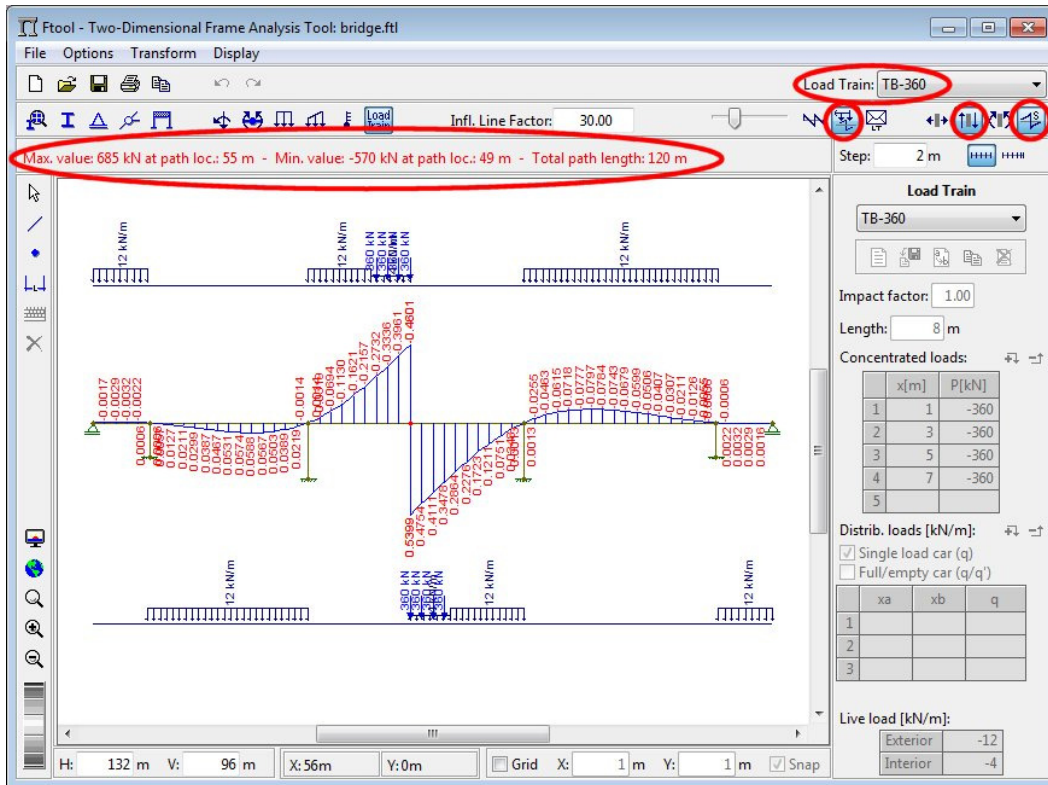


### Select cross-section for visualization of shear force influence line result

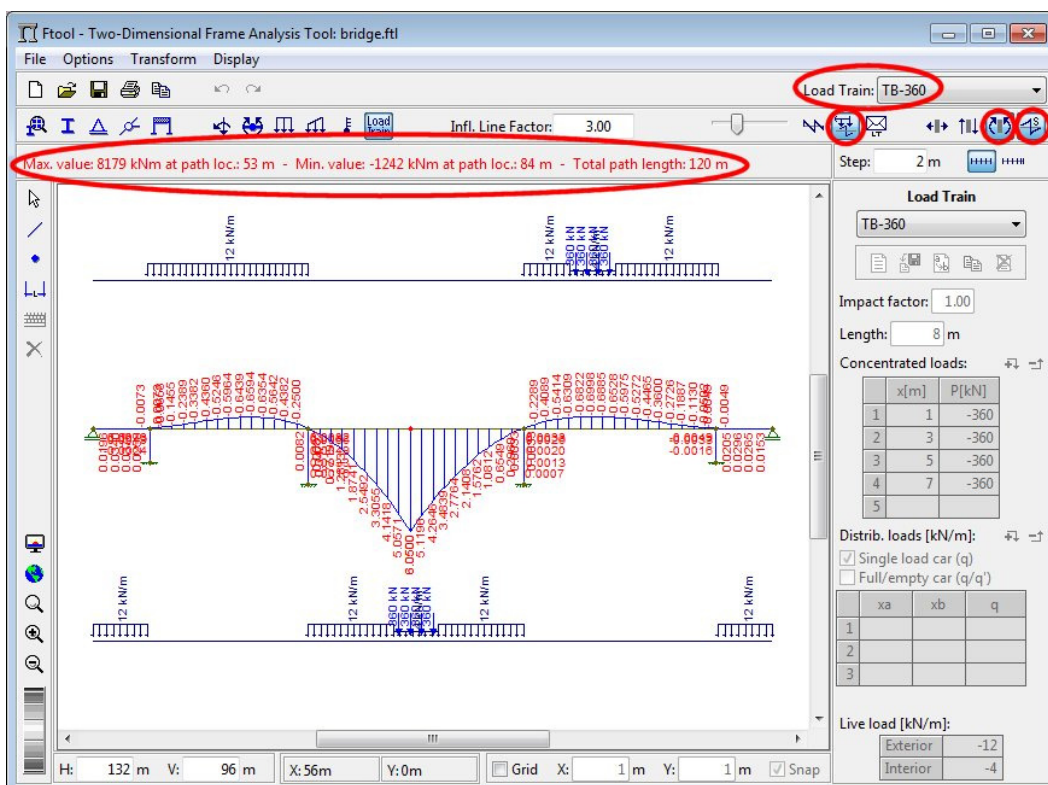




### Visualization of shear force influence line result and critical positions (that cause minimum and maximum) of highway load-train

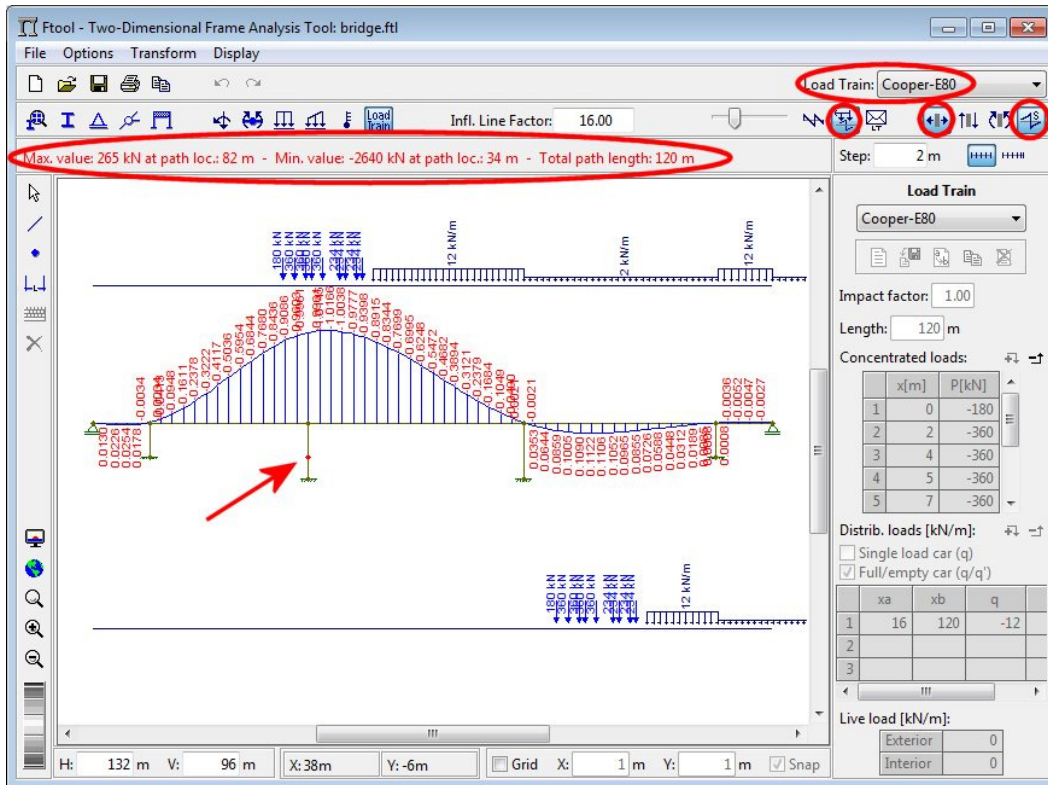


### Visualization of bending moment influence line result and critical positions (that cause minimum and maximum) of highway load-train

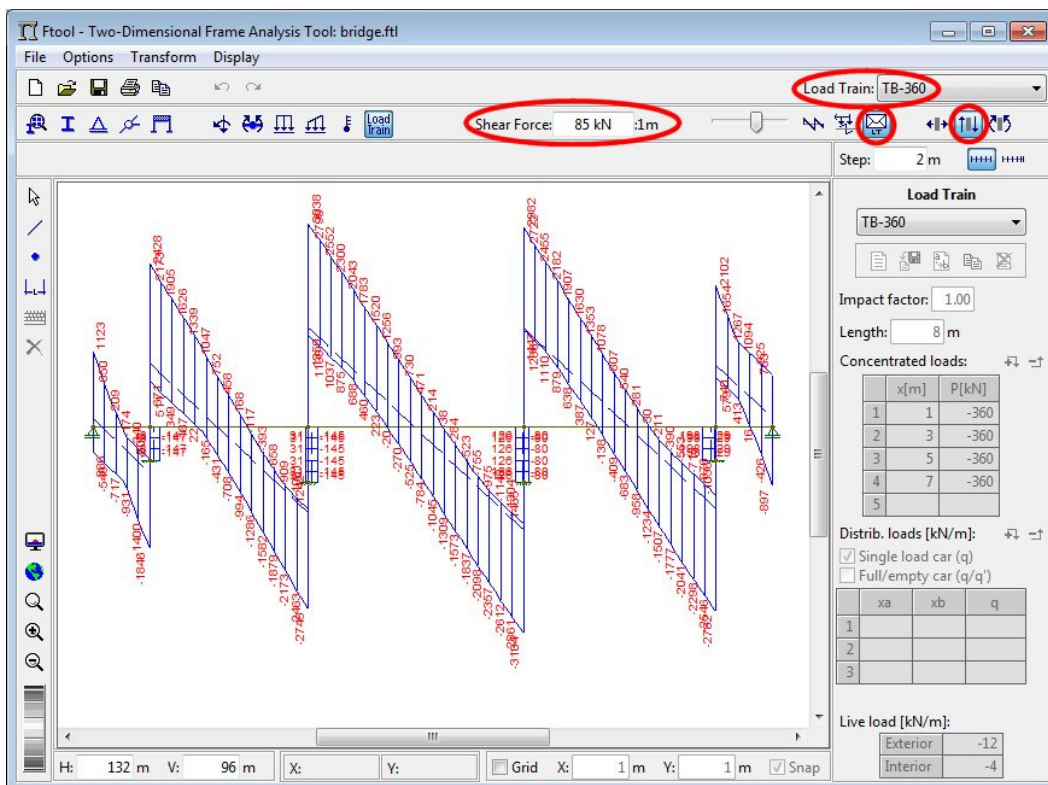




### Visualization of axial force influence line result and critical positions (that cause minimum and maximum) of railroad load-train



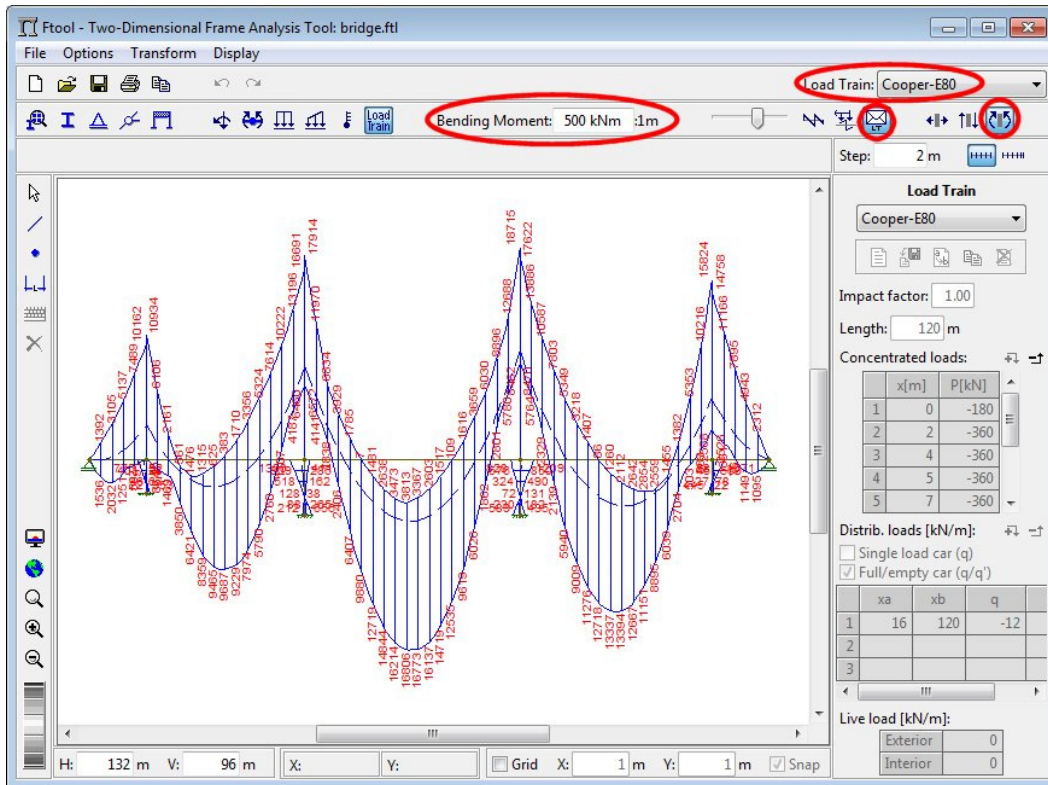
### Visualization of shear force envelopes for highway load-train (including effect of permanent load)



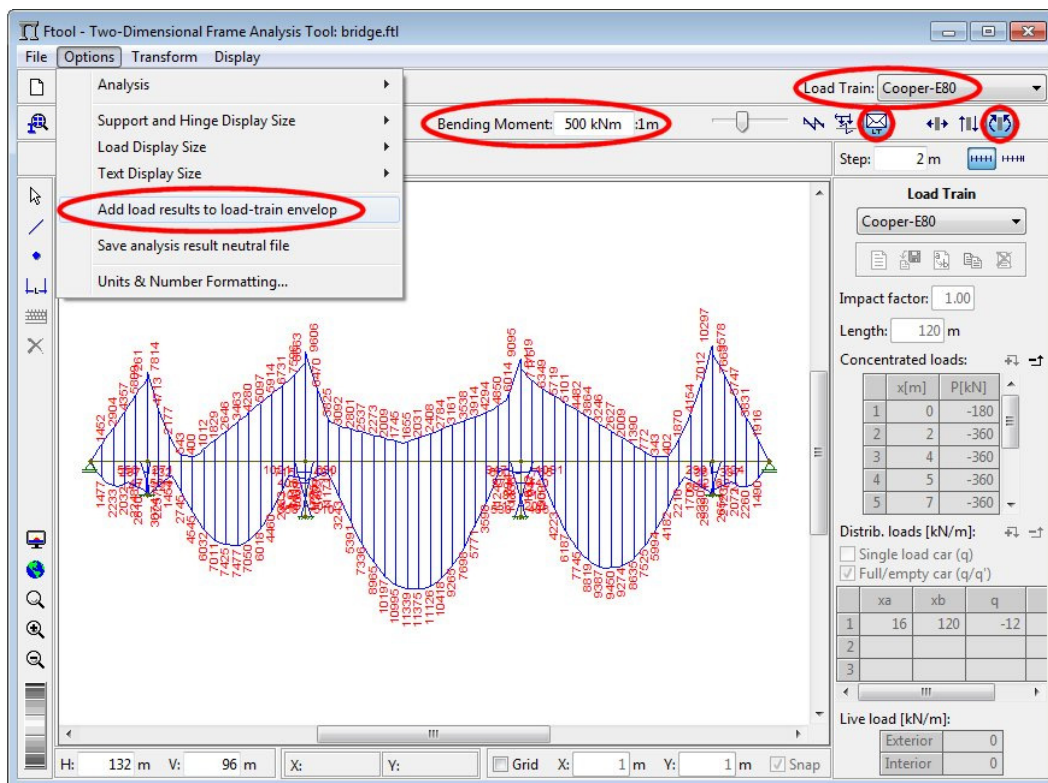




### Visualization of bending moment envelopes for railroad load-train (including effect of permanent load)



### Visualization of bending moment envelopes for railroad load-train (excluding effect of permanent load)





### Consulting step results values along central beam member of bending moment envelopes for railroad load-train (excluding effect of permanent load)

